



ELECTRONIC COPY

LABORATORY GROWN DIAMOND REPORT

May 31, 2024  
IGI Report Number LG636431923  
Description LABORATORY GROWN DIAMOND  
Shape and Cutting Style PRINCESS CUT  
Measurements 6.30 X 6.30 X 4.59 MM

GRADING RESULTS

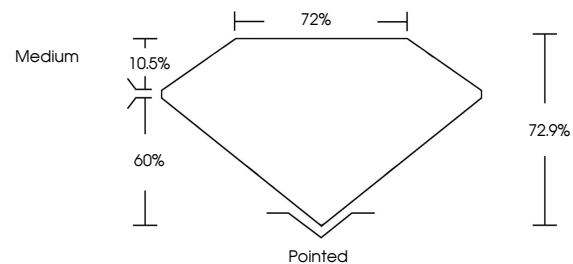
Carat Weight 1.48 CARAT  
Color Grade E  
Clarity Grade VVS 2  
Cut Grade EXCELLENT

ADDITIONAL GRADING INFORMATION

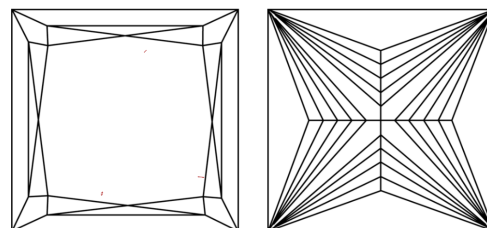
Polish EXCELLENT  
Symmetry EXCELLENT  
Fluorescence NONE  
Inscription(s) IGI LG636431923

Comments: This Laboratory Grown Diamond was created by Chemical Vapor Deposition (CVD) growth process.  
Type IIa

PROPORTIONS

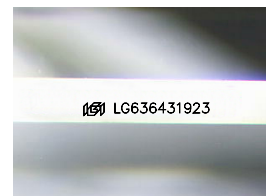


CLARITY CHARACTERISTICS



KEY TO SYMBOLS

Red symbols indicate internal characteristics.  
Green symbols indicate external characteristics.



Sample Image Used

COLOR

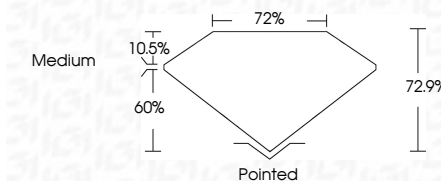
D E F G H I J Faint Very Light Light

CLARITY

IF VS 1-2 VS 1-2 SI 1-2 I 1-3  
Internally Flawless Very Very Slightly Included Very Slightly Included Slightly Included Included



May 31, 2024  
IGI Report Number LG636431923  
Description LABORATORY GROWN DIAMOND  
Shape and Cutting Style PRINCESS CUT  
Measurements 6.30 X 6.30 X 4.59 MM  
GRADING RESULTS  
Carat Weight 1.48 CARAT  
Color Grade E  
Clarity Grade VVS 2  
Cut Grade EXCELLENT



ADDITIONAL GRADING INFORMATION

Polish EXCELLENT  
Symmetry EXCELLENT  
Fluorescence NONE  
Inscription(s) IGI LG636431923  
Comments: This Laboratory Grown Diamond was created by Chemical Vapor Deposition (CVD) growth process.  
Type IIa



IGI



May 31, 2024  
IGI Report No. LG636431923  
PRINCESS CUT  
6.30 X 6.30 X 4.59 MM  
1.48 CARAT  
E  
VVS 2  
EXCELLENT  
72.9%  
72%  
Medium  
Pointed  
EXCELLENT  
EXCELLENT  
NONE  
IGI LG636431923  
Comments: This Laboratory Grown Diamond was created by Chemical Vapor Deposition (CVD) growth process.  
Type IIa