



ELECTRONIC COPY

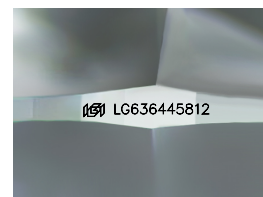
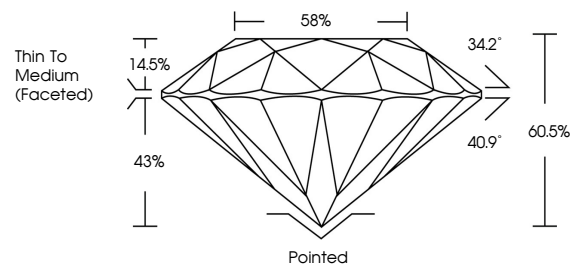
LG636445812
Report verification at igi.org



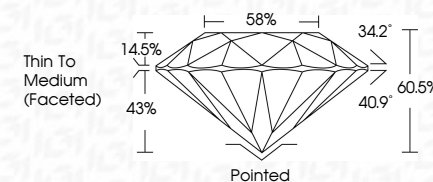
May 23, 2024
IGI Report Number LG636445812
Description LABORATORY GROWN DIAMOND
Shape and Cutting Style ROUND BRILLIANT
Measurements 7.86 - 7.90 X 4.76 MM
GRADING RESULTS
Carat Weight 1.78 CARAT
Color Grade D
Clarity Grade VVS 2
Cut Grade IDEAL

May 23, 2024
IGI Report Number LG636445812
Description LABORATORY GROWN DIAMOND
Shape and Cutting Style ROUND BRILLIANT
Measurements 7.86 - 7.90 X 4.76 MM
GRADING RESULTS
Carat Weight 1.78 CARAT
Color Grade D
Clarity Grade VVS 2
Cut Grade IDEAL

PROPORTIONS



Sample Image Used



ADDITIONAL GRADING INFORMATION

Polish EXCELLENT
Symmetry EXCELLENT
Fluorescence NONE
Inscription(s) LG636445812

ADDITIONAL GRADING INFORMATION

Polish EXCELLENT
Symmetry EXCELLENT
Fluorescence NONE
Inscription(s) LG636445812
Comments: HEARTS & ARROWS
This Laboratory Grown Diamond was created by Chemical Vapor Deposition (CVD) growth process and may include post-growth treatment. Type IIa

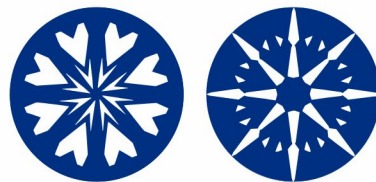
Comments: HEARTS & ARROWS
This Laboratory Grown Diamond was created by Chemical Vapor Deposition (CVD) growth process and may include post-growth treatment. Type IIa

COLOR

D E F G H I J Faint Very Light Light

CLARITY

IF VVS 1-2 VS 1-2 SI 1-2 I 1-3
Internally Flawless Very Very Slightly Included Very Slightly Included Slightly Included Included



IGI

May 23, 2024
IGI Report No LG636445812
ROUND BRILLIANT
7.86 - 7.90 X 4.76 MM
Carat Weight 1.78 CARAT
Color Grade D
Clarity Grade VVS 2
Cut Grade IDEAL
Depth 60.5%
Table 86%
Girdle Thin To Medium (Faceted)
Culet Pointed
Polish EXCELLENT
Symmetry EXCELLENT
Fluorescence NONE
Inscriptions(s) LG636445812
Comments: HEARTS & ARROWS
This Laboratory Grown Diamond was created by Chemical Vapor Deposition (CVD) growth process and may include post-growth treatment. Type IIa