



**INTERNATIONAL
GEMOLOGICAL
INSTITUTE**

ELECTRONIC COPY

LG636464636



May 23, 2024

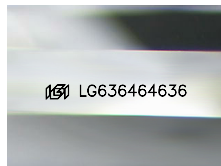
IGI Report Number LG636464636
**CUT CORNERED RECTANGULAR
MODIFIED BRILLIANT
LABORATORY GROWN DIAMOND**

4.73 X 3.16 X 2.53 MM
Carat Weight **0.31 CARAT**
Color Grade **D**
Clarity Grade **VS 1**
Polish **VERY GOOD**
Symmetry **VERY GOOD**
Fluorescence **NONE**
Inscription(s) **IGI LG636464636**

Comments: This Laboratory Grown Diamond was created by Chemical Vapor Deposition (CVD) growth process. Type IIa

LABORATORY GROWN DIAMOND REPORT

May 23, 2024
IGI Report Number **LG636464636**
Description **LABORATORY GROWN DIAMOND**
Shape and Cutting Style **CUT CORNERED RECTANGULAR MODIFIED
BRILLIANT**
Measurements **4.73 X 3.16 X 2.53 MM**



Sample Image Used

GRADING RESULTS

Carat Weight **0.31 CARAT**
Color Grade **D**
Clarity Grade **VS 1**

ADDITIONAL GRADING INFORMATION

Polish **VERY GOOD**
Symmetry **VERY GOOD**
Fluorescence **NONE**
Inscription(s) **IGI LG636464636**

Comments: This Laboratory Grown Diamond was created by Chemical Vapor Deposition (CVD) growth process. Type IIa

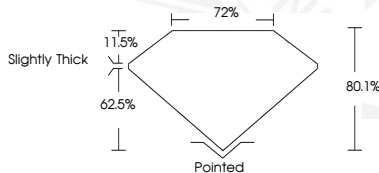


May 23, 2024

IGI Report Number LG636464636
**CUT CORNERED RECTANGULAR
MODIFIED BRILLIANT
LABORATORY GROWN DIAMOND**

4.73 X 3.16 X 2.53 MM
Carat Weight **0.31 CARAT**
Color Grade **D**
Clarity Grade **VS 1**
Polish **VERY GOOD**
Symmetry **VERY GOOD**
Fluorescence **NONE**
Inscription(s) **IGI LG636464636**

Comments: This Laboratory Grown Diamond was created by Chemical Vapor Deposition (CVD) growth process. Type IIa



THIS DOCUMENT WAS PRODUCED WITH THE FOLLOWING SECURITY MEASURES: SPECIAL DOCUMENT PAPER, INK SCREENS, WATERMARK, BACKGROUND DESIGNS, HOLOGRAM AND OTHER SECURITY FEATURES NOT LISTED AND DO EXCEED DOCUMENT SECURITY INDUSTRY GUIDELINES.

For terms & conditions and to verify this report, please visit www.igi.org