



ELECTRONIC COPY

LABORATORY GROWN DIAMOND REPORT

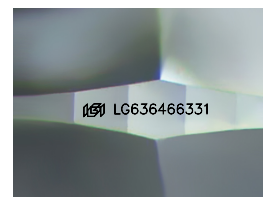
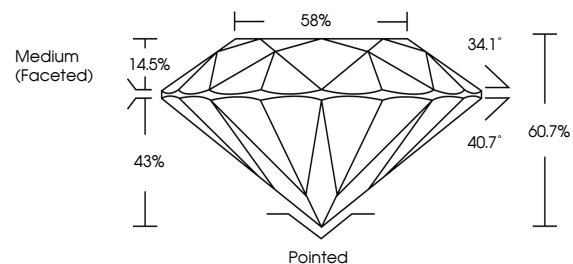
May 27, 2024
IGI Report Number LG636466331
Description LABORATORY GROWN DIAMOND
Shape and Cutting Style ROUND BRILLIANT
Measurements 12.74 - 12.80 X 7.75 MM
GRADING RESULTS
Carat Weight 7.74 CARATS
Color Grade E
Clarity Grade VVS 2
Cut Grade IDEAL

ADDITIONAL GRADING INFORMATION

Polish EXCELLENT
Symmetry EXCELLENT
Fluorescence NONE
Inscription(s) LG636466331

Comments: HEARTS & ARROWS
This Laboratory Grown Diamond was created by Chemical Vapor Deposition (CVD) growth process. Type IIa

PROPORTIONS



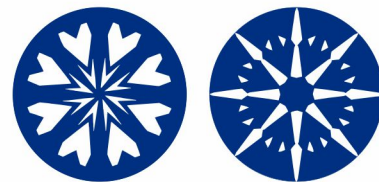
Sample Image Used

COLOR

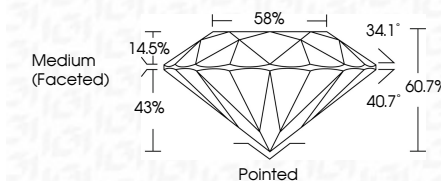
D E F G H I J Faint Very Light Light

CLARITY

IF VVS 1-2 VS 1-2 SI 1-2 I 1-3
Internally Flawless Very Very Slightly Included Very Slightly Included Slightly Included Included



May 27, 2024
IGI Report Number LG636466331
Description LABORATORY GROWN DIAMOND
Shape and Cutting Style ROUND BRILLIANT
Measurements 12.74 - 12.80 X 7.75 MM
GRADING RESULTS
Carat Weight 7.74 CARATS
Color Grade E
Clarity Grade VVS 2
Cut Grade IDEAL



ADDITIONAL GRADING INFORMATION

Polish EXCELLENT
Symmetry EXCELLENT
Fluorescence NONE
Inscription(s) LG636466331
Comments: HEARTS & ARROWS
This Laboratory Grown Diamond was created by Chemical Vapor Deposition (CVD) growth process. Type IIa



IGI

Summary table with fields: May 27, 2024, IGI Report No LG636466331, ROUND BRILLIANT, 12.74 - 12.80 X 7.75 MM, 7.74 CARATS, E, VVS 2, IDEAL, 60.7%, 58%, Medium (Faceted), Pointed, EXCELLENT, EXCELLENT, NONE, LG636466331