



ELECTRONIC COPY

LG636469085
Report verification at igi.org

LABORATORY GROWN DIAMOND REPORT

May 25, 2024
IGI Report Number **LG636469085**
Description **LABORATORY GROWN DIAMOND**
Shape and Cutting Style **CUT CORNERED RECTANGULAR MODIFIED BRILLIANT**
Measurements **9.60 X 7.06 X 4.74 MM**

GRADING RESULTS

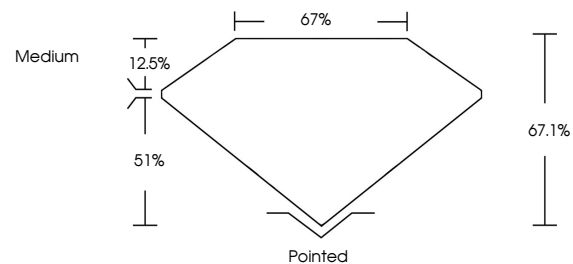
Carat Weight **2.74 CARATS**
Color Grade **F**
Clarity Grade **VS 1**

ADDITIONAL GRADING INFORMATION

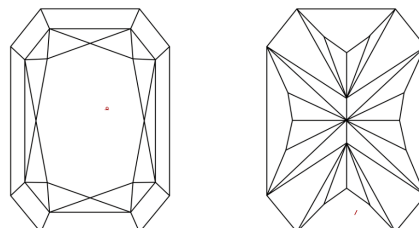
Polish **EXCELLENT**
Symmetry **EXCELLENT**
Fluorescence **NONE**
Inscription(s) **IGI LG636469085**

Comments: This Laboratory Grown Diamond was created by Chemical Vapor Deposition (CVD) growth process.
Type IIa

PROPORTIONS

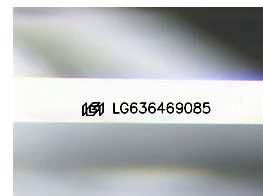


CLARITY CHARACTERISTICS



KEY TO SYMBOLS

Red symbols indicate internal characteristics.
Green symbols indicate external characteristics.



Sample Image Used

COLOR

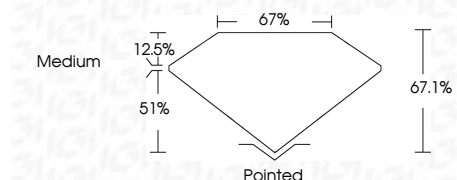
D E F G H I J Faint Very Light Light

CLARITY

IF	VS ¹⁻²	VS ¹⁻²	SI ¹⁻²	I ¹⁻³
Internally Flawless	Very Very Slightly Included	Very Slightly Included	Slightly Included	Included



May 25, 2024
IGI Report Number **LG636469085**
Description **LABORATORY GROWN DIAMOND**
Shape and Cutting Style **CUT CORNERED RECTANGULAR MODIFIED BRILLIANT**
Measurements **9.60 X 7.06 X 4.74 MM**
GRADING RESULTS
Carat Weight **2.74 CARATS**
Color Grade **F**
Clarity Grade **VS 1**



ADDITIONAL GRADING INFORMATION

Polish **EXCELLENT**
Symmetry **EXCELLENT**
Fluorescence **NONE**
Inscription(s) **IGI LG636469085**
Comments: This Laboratory Grown Diamond was created by Chemical Vapor Deposition (CVD) growth process.
Type IIa



May 25, 2024
IGI Report No. **LG636469085**
CUT CORNERED RECT. MODIFIED BRILLIANT
9.60 X 7.06 X 4.74 MM
Carat Weight **2.74 CARATS**
Color Grade **F**
Clarity Grade **VS 1**
Depth **51.1%**
Table **67%**
Girdle **Medium**
Culet **Pointed**
Polish **EXCELLENT**
Symmetry **EXCELLENT**
Fluorescence **NONE**
Inscription(s) **IGI LG636469085**

Comments: This Laboratory Grown Diamond was created by Chemical Vapor Deposition (CVD) growth process.
Type IIa