



ELECTRONIC COPY

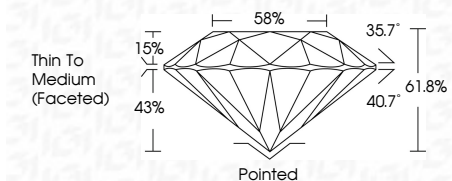
LG636473039 Report verification at igi.org



May 25, 2024 IGI Report Number LG636473039 Description LABORATORY GROWN DIAMOND Shape and Cutting Style ROUND BRILLIANT Measurements 8.08 - 8.12 X 5.00 MM

GRADING RESULTS

Carat Weight 2.04 CARATS Color Grade F Clarity Grade VS 1 Cut Grade IDEAL



ADDITIONAL GRADING INFORMATION

Polish EXCELLENT Symmetry EXCELLENT Fluorescence NONE Inscription(s) IGI LG636473039 Comments: This Laboratory Grown Diamond was created by Chemical Vapor Deposition (CVD) growth process. Type IIa



Table with 2 columns: Property and Value. Includes Carat Weight (2.04 CARATS), Color Grade (F), Clarity Grade (VS 1), Depth (61.8%), Table (58%), Girdle (Thin To Medium (Faceted)), and other grading details.

LABORATORY GROWN DIAMOND REPORT

May 25, 2024 IGI Report Number LG636473039 Description LABORATORY GROWN DIAMOND Shape and Cutting Style ROUND BRILLIANT Measurements 8.08 - 8.12 X 5.00 MM

GRADING RESULTS

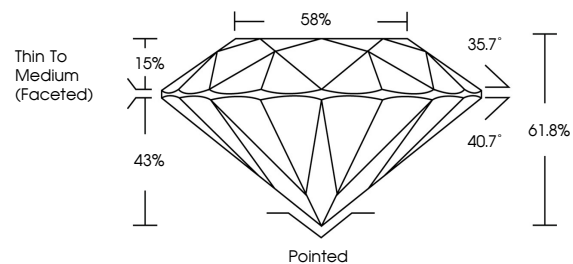
Carat Weight 2.04 CARATS Color Grade F Clarity Grade VS 1 Cut Grade IDEAL

ADDITIONAL GRADING INFORMATION

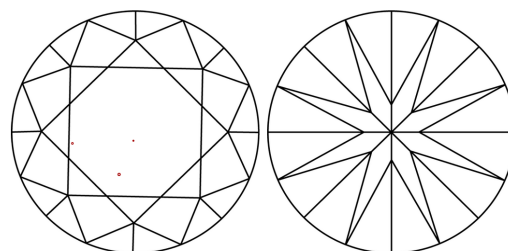
Polish EXCELLENT Symmetry EXCELLENT Fluorescence NONE Inscription(s) IGI LG636473039

Comments: This Laboratory Grown Diamond was created by Chemical Vapor Deposition (CVD) growth process. Type IIa

PROPORTIONS

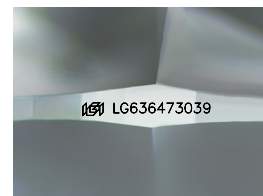


CLARITY CHARACTERISTICS



KEY TO SYMBOLS

Red symbols indicate internal characteristics. Green symbols indicate external characteristics.



Sample Image Used

COLOR

D E F G H I J Faint Very Light Light

CLARITY

Table with 5 columns: Clarity Grade (IF, VS 1-2, VS 1-2, SI 1-2, I 1-3) and Description (Internally Flawless, Very Very Slightly Included, Very Slightly Included, Slightly Included, Included).

