



ELECTRONIC COPY

LG636474133 Report verification at igi.org

LABORATORY GROWN DIAMOND REPORT

May 28, 2024 IGI Report Number LG636474133 Description LABORATORY GROWN DIAMOND Shape and Cutting Style EMERALD CUT Measurements 7.95 X 5.84 X 4.07 MM

GRADING RESULTS

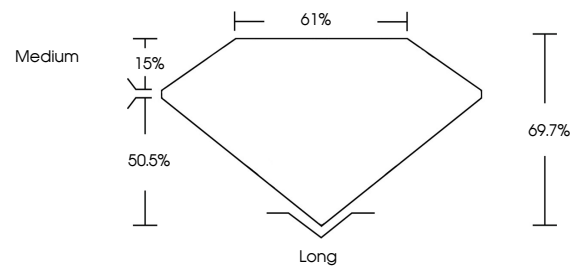
Carat Weight 1.88 CARAT Color Grade E Clarity Grade VS 1

ADDITIONAL GRADING INFORMATION

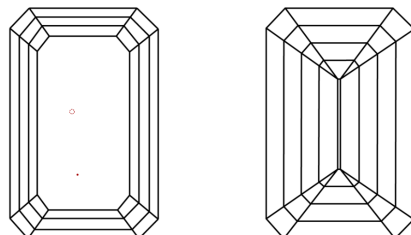
Polish EXCELLENT Symmetry EXCELLENT Fluorescence NONE Inscription(s) IGI LG636474133

Comments: This Laboratory Grown Diamond was created by Chemical Vapor Deposition (CVD) growth process. Type IIa

PROPORTIONS

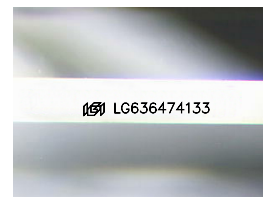


CLARITY CHARACTERISTICS



KEY TO SYMBOLS

Red symbols indicate internal characteristics. Green symbols indicate external characteristics.



Sample Image Used

COLOR

D E F G H I J Faint Very Light Light

CLARITY

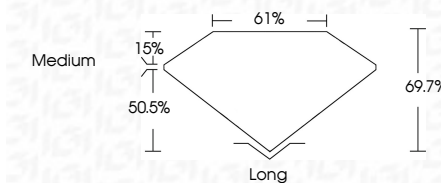
IF VS 1-2 VS 1-2 SI 1-2 I 1-3 Internally Flawless Very Very Slightly Included Very Slightly Included Slightly Included Included



May 28, 2024 IGI Report Number LG636474133 Description LABORATORY GROWN DIAMOND Shape and Cutting Style EMERALD CUT Measurements 7.95 X 5.84 X 4.07 MM

GRADING RESULTS

Carat Weight 1.88 CARAT Color Grade E Clarity Grade VS 1



ADDITIONAL GRADING INFORMATION

Polish EXCELLENT Symmetry EXCELLENT Fluorescence NONE Inscription(s) IGI LG636474133 Comments: This Laboratory Grown Diamond was created by Chemical Vapor Deposition (CVD) growth process. Type IIa



IGI

Summary table of report details including date, report number, cut, weight, color, clarity, and measurements.

Comments: This Laboratory Grown Diamond was created by Chemical Vapor Deposition (CVD) growth process. Type IIa