



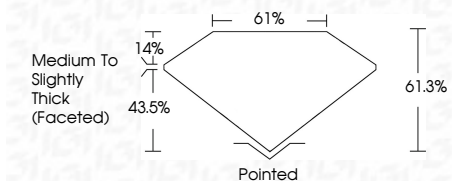
ELECTRONIC COPY

LG636474805 Report verification at igi.org



May 28, 2024 IGI Report Number LG636474805 Description LABORATORY GROWN DIAMOND Shape and Cutting Style OVAL BRILLIANT Measurements 8.17 X 5.71 X 3.50 MM

GRADING RESULTS Carat Weight 1.02 CARAT Color Grade E Clarity Grade VVS 2



ADDITIONAL GRADING INFORMATION Polish EXCELLENT Symmetry EXCELLENT Fluorescence NONE Inscription(s) LG636474805 Comments: This Laboratory Grown Diamond was created by Chemical Vapor Deposition (CVD) growth process. Type IIa



May 28, 2024 IGI Report No LG636474805 OVAL BRILLIANT 1.02 CARAT E 8.17 X 5.71 X 3.50 MM Carat Weight Color Grade VVS 2 Depth 61.3% Table 14% Girdle Medium to Slightly Thick (Faceted) Pointed EXCELLENT EXCELLENT NONE NONE LG636474805

Comments: This Laboratory Grown Diamond was created by Chemical Vapor Deposition (CVD) growth process. Type IIa

LABORATORY GROWN DIAMOND REPORT

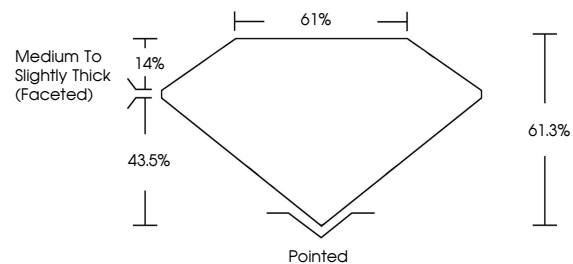
May 28, 2024 IGI Report Number LG636474805 Description LABORATORY GROWN DIAMOND Shape and Cutting Style OVAL BRILLIANT Measurements 8.17 X 5.71 X 3.50 MM

GRADING RESULTS Carat Weight 1.02 CARAT Color Grade E Clarity Grade VVS 2

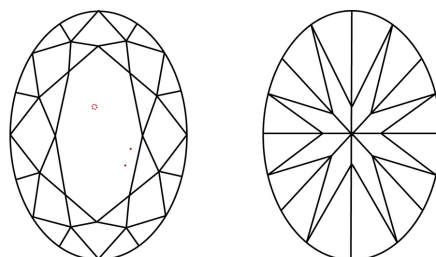
ADDITIONAL GRADING INFORMATION Polish EXCELLENT Symmetry EXCELLENT Fluorescence NONE Inscription(s) LG636474805

Comments: This Laboratory Grown Diamond was created by Chemical Vapor Deposition (CVD) growth process. Type IIa

PROPORTIONS

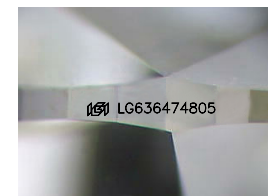


CLARITY CHARACTERISTICS



KEY TO SYMBOLS

Red symbols indicate internal characteristics. Green symbols indicate external characteristics.



Sample Image Used

COLOR

D E F G H I J Faint Very Light Light

CLARITY

IF VVS 1-2 VS 1-2 SI 1-2 I 1-3 Internally Flawless Very Very Slightly Included Very Slightly Included Slightly Included Included

