



ELECTRONIC COPY

LABORATORY GROWN DIAMOND REPORT

May 28, 2024  
IGI Report Number LG636475000  
Description LABORATORY GROWN DIAMOND  
Shape and Cutting Style EMERALD CUT  
Measurements 8.27 X 5.70 X 3.92 MM

GRADING RESULTS

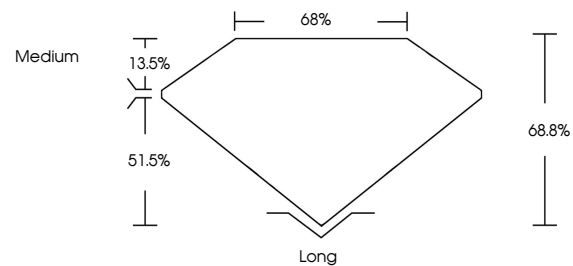
Carat Weight 1.81 CARAT  
Color Grade F  
Clarity Grade VS 2

ADDITIONAL GRADING INFORMATION

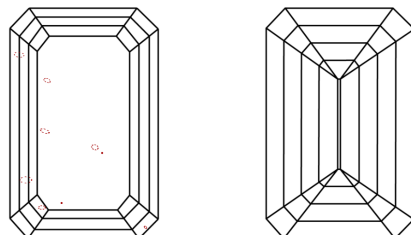
Polish EXCELLENT  
Symmetry EXCELLENT  
Fluorescence NONE  
Inscription(s) IGI LG636475000

Comments: This Laboratory Grown Diamond was created by Chemical Vapor Deposition (CVD) growth process.  
Type IIa

PROPORTIONS

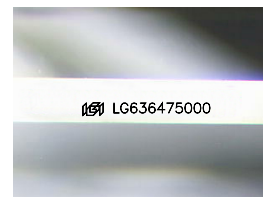


CLARITY CHARACTERISTICS



KEY TO SYMBOLS

Red symbols indicate internal characteristics.  
Green symbols indicate external characteristics.



Sample Image Used

COLOR

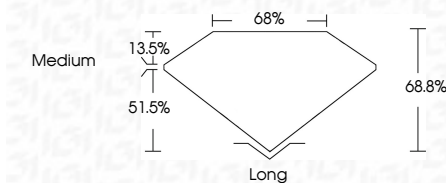
D E F G H I J Faint Very Light Light

CLARITY

IF VS 1-2 VS 1-2 SI 1-2 I 1-3  
Internally Flawless Very Very Slightly Included Very Slightly Included Slightly Included Included



May 28, 2024  
IGI Report Number LG636475000  
Description LABORATORY GROWN DIAMOND  
Shape and Cutting Style EMERALD CUT  
Measurements 8.27 X 5.70 X 3.92 MM  
GRADING RESULTS  
Carat Weight 1.81 CARAT  
Color Grade F  
Clarity Grade VS 2



ADDITIONAL GRADING INFORMATION

Polish EXCELLENT  
Symmetry EXCELLENT  
Fluorescence NONE  
Inscription(s) IGI LG636475000  
Comments: This Laboratory Grown Diamond was created by Chemical Vapor Deposition (CVD) growth process.  
Type IIa



IGI



May 28, 2024  
IGI Report No. LG636475000  
EMERALD CUT  
8.27 X 5.70 X 3.92 MM  
1.81 CARAT  
Color Grade F  
Clarity Grade VS 2  
Depth 68.8%  
Table 68%  
Girdle Medium  
Culet Long  
Polish EXCELLENT  
Symmetry EXCELLENT  
Fluorescence NONE  
Inscription(s) IGI LG636475000  
Comments: This Laboratory Grown Diamond was created by Chemical Vapor Deposition (CVD) growth process.  
Type IIa