



**INTERNATIONAL  
GEMOLOGICAL  
INSTITUTE**

**ELECTRONIC COPY**

**LG636476160**



June 1, 2024

**IGI Report Number LG636476160**  
**ROUND BRILLIANT**  
**LABORATORY GROWN DIAMOND**

**4.46 - 4.49 X 2.60 MM**  
Carat Weight **0.31 CARAT**  
Color Grade **FANCY VIVID PINK**  
Clarity Grade **VS 1**  
Cut Grade **EXCELLENT**  
Polish **VERY GOOD**  
Symmetry **GOOD**  
Fluorescence **SLIGHT**  
Inscription(s) **IGI LG636476160**

Comments: This Laboratory Grown Diamond was created by High Pressure High Temperature (HPHT) growth process. Indications of post-growth treatment.

**LABORATORY GROWN DIAMOND REPORT**

June 1, 2024  
IGI Report Number **LG636476160**  
Description **LABORATORY GROWN DIAMOND**  
Shape and Cutting Style **ROUND BRILLIANT**  
Measurements **4.46 - 4.49 X 2.60 MM**

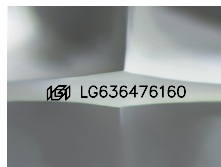
**GRADING RESULTS**

Carat Weight **0.31 CARAT**  
Color Grade **FANCY VIVID PINK**  
Clarity Grade **VS 1**  
Cut Grade **EXCELLENT**

**ADDITIONAL GRADING INFORMATION**

Polish **VERY GOOD**  
Symmetry **GOOD**  
Fluorescence **SLIGHT**  
Inscription(s) **IGI LG636476160**

Comments: This Laboratory Grown Diamond was created by High Pressure High Temperature (HPHT) growth process. Indications of post-growth treatment.



Sample Image Used

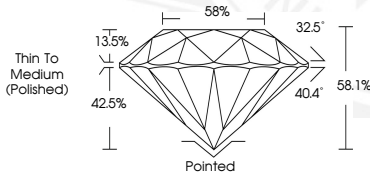


June 1, 2024

**IGI Report Number LG636476160**  
**ROUND BRILLIANT**  
**LABORATORY GROWN DIAMOND**

**4.46 - 4.49 X 2.60 MM**  
Carat Weight **0.31 CARAT**  
Color Grade **FANCY VIVID PINK**  
Clarity Grade **VS 1**  
Cut Grade **EXCELLENT**  
Polish **VERY GOOD**  
Symmetry **GOOD**  
Fluorescence **SLIGHT**  
Inscription(s) **IGI LG636476160**

Comments: This Laboratory Grown Diamond was created by High Pressure High Temperature (HPHT) growth process. Indications of post-growth treatment.



THIS DOCUMENT WAS PRODUCED WITH THE FOLLOWING SECURITY MEASURES: SPECIAL DOCUMENT PAPER, PINK SCREENS, WATERMARK, BACKGROUND DESIGN, HOLOGRAM AND OTHER SECURITY FEATURES NOT LISTED AND DO EXCEED DOCUMENT SECURITY INDUSTRY GUIDELINES.

For terms & conditions and to verify this report, please visit [www.igi.org](http://www.igi.org)