



ELECTRONIC COPY

LG636476423
Report verification at igi.org



June 1, 2024
IGI Report Number LG636476423
Description LABORATORY GROWN DIAMOND
Shape and Cutting Style CUSHION MODIFIED BRILLIANT
Measurements 6.48 X 5.20 X 3.57 MM
GRADING RESULTS
Carat Weight 1.12 CARAT
Color Grade FANCY INTENSE YELLOW
Clarity Grade VVS 2

LABORATORY GROWN DIAMOND REPORT

June 1, 2024
IGI Report Number LG636476423
Description LABORATORY GROWN DIAMOND
Shape and Cutting Style CUSHION MODIFIED BRILLIANT
Measurements 6.48 X 5.20 X 3.57 MM

GRADING RESULTS

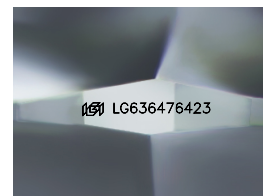
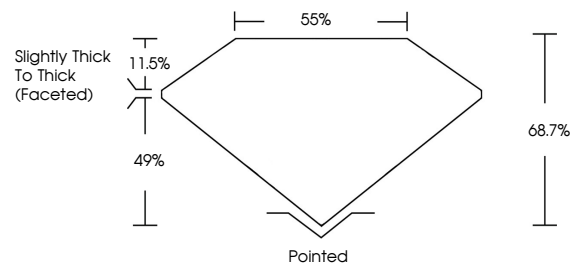
Carat Weight 1.12 CARAT
Color Grade FANCY INTENSE YELLOW
Clarity Grade VVS 2

ADDITIONAL GRADING INFORMATION

Polish EXCELLENT
Symmetry EXCELLENT
Fluorescence NONE
Inscription(s) IGI LG636476423

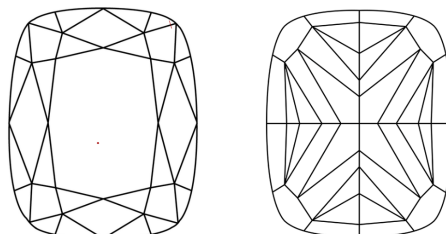
Comments: This Laboratory Grown Diamond was created by Chemical Vapor Deposition (CVD) growth process.

PROPORTIONS



Sample Image Used

CLARITY CHARACTERISTICS



KEY TO SYMBOLS

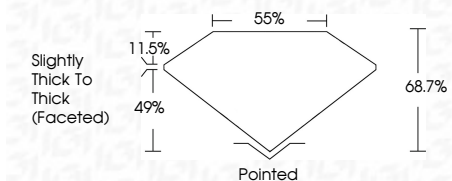
Red symbols indicate internal characteristics.
Green symbols indicate external characteristics.

COLOR

D E F G H I J Faint Very Light Light

CLARITY

IF VVS 1-2 VS 1-2 SI 1-2 I 1-3
Internally Flawless Very Very Slightly Included Very Slightly Included Slightly Included Included



ADDITIONAL GRADING INFORMATION

Polish EXCELLENT
Symmetry EXCELLENT
Fluorescence NONE
Inscription(s) IGI LG636476423
Comments: This Laboratory Grown Diamond was created by Chemical Vapor Deposition (CVD) growth process.



IGI



June 1, 2024
IGI Report No LG636476423
CUSHION MODIFIED BRILLIANT
6.48 X 5.20 X 3.57 MM
1.12 CARAT
FANCY INTENSE YELLOW
VVS 2
68.7%
55%
Slightly Thick To Thick (Faceted)
Pointed
EXCELLENT
EXCELLENT
NONE
IGI LG636476423
Comments: This Laboratory Grown Diamond was created by Chemical Vapor Deposition (CVD) growth process.