



ELECTRONIC COPY

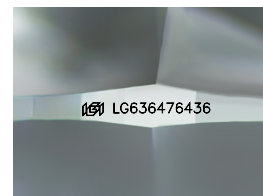
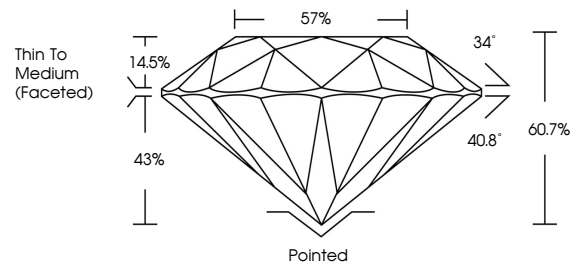
LG636476436
Report verification at igi.org



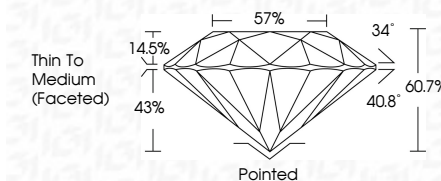
May 24, 2024
IGI Report Number LG636476436
Description LABORATORY GROWN DIAMOND
Shape and Cutting Style ROUND BRILLIANT
Measurements 6.88 - 6.93 X 4.19 MM
GRADING RESULTS
Carat Weight 1.21 CARAT
Color Grade D
Clarity Grade VS 1
Cut Grade IDEAL

May 24, 2024
IGI Report Number LG636476436
Description LABORATORY GROWN DIAMOND
Shape and Cutting Style ROUND BRILLIANT
Measurements 6.88 - 6.93 X 4.19 MM
GRADING RESULTS
Carat Weight 1.21 CARAT
Color Grade D
Clarity Grade VS 1
Cut Grade IDEAL

PROPORTIONS



Sample Image Used



ADDITIONAL GRADING INFORMATION

Polish EXCELLENT
Symmetry EXCELLENT
Fluorescence NONE
Inscription(s) IGI LG636476436

ADDITIONAL GRADING INFORMATION

Polish EXCELLENT
Symmetry EXCELLENT
Fluorescence NONE
Inscription(s) IGI LG636476436
Comments: HEARTS & ARROWS
This Laboratory Grown Diamond was created by Chemical Vapor Deposition (CVD) growth process. Type IIa

COLOR

D E F G H I J Faint Very Light Light

CLARITY

IF VS 1-2 VS 1-2 SI 1-2 I 1-3
Internally Flawless Very Very Slightly Included Very Slightly Included Slightly Included Included



www.igi.org



IGI

May 24, 2024
IGI Report No LG636476436
ROUND BRILLIANT
6.88 - 6.93 X 4.19 MM
1.21 CARAT
D
VS 1
IDEAL
60.7%
57%
Thin To Medium (Faceted)
Pointed
EXCELLENT
EXCELLENT
NONE
IGI LG636476436
Comments: HEARTS & ARROWS
This Laboratory Grown Diamond was created by Chemical Vapor Deposition (CVD) growth process. Type IIa