



ELECTRONIC COPY

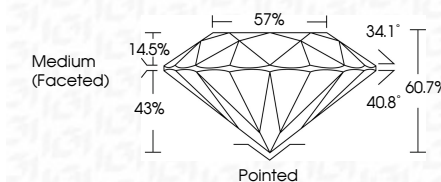
LG636476441
Report verification at igi.org



May 24, 2024
IGI Report Number LG636476441
Description LABORATORY GROWN DIAMOND
Shape and Cutting Style ROUND BRILLIANT
Measurements 8.63 - 8.65 X 5.25 MM

GRADING RESULTS

Carat Weight 2.38 CARATS
Color Grade E
Clarity Grade VVS 2
Cut Grade IDEAL



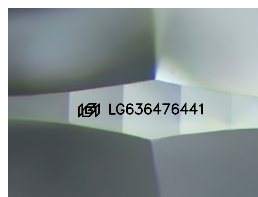
ADDITIONAL GRADING INFORMATION

Polish EXCELLENT
Symmetry EXCELLENT
Fluorescence NONE
Inscription(s) LG636476441
Comments: HEARTS & ARROWS
This Laboratory Grown Diamond was created by Chemical Vapor Deposition (CVD) growth process. Type IIa



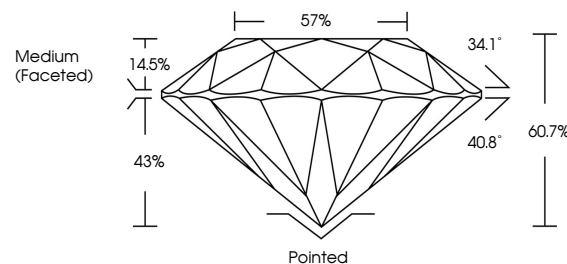
IGI

May 24, 2024
IGI Report No LG636476441
ROUND BRILLIANT
8.63 - 8.65 X 5.25 MM
2.38 CARATS
E
VVS 2
IDEAL
60.7%
57%
Medium (Faceted)
Pointed
EXCELLENT
EXCELLENT
NONE
IGI LG636476441
Comments: HEARTS & ARROWS
This Laboratory Grown Diamond was created by Chemical Vapor Deposition (CVD) growth process. Type IIa



Sample Image Used

PROPORTIONS



COLOR

D E F G H I J Faint Very Light Light

CLARITY

IF VVS 1-2 VS 1-2 SI 1-2 I 1-3
Internally Flawless Very Very Slightly Included Very Slightly Included Slightly Included Included

