



**ELECTRONIC COPY**

LG636478758  
Report verification at igi.org



May 28, 2024

IGI Report Number **LG636478758**

Description **LABORATORY GROWN DIAMOND**

Shape and Cutting Style **ROUND BRILLIANT**

Measurements **10.01 - 10.04 X 6.04 MM**

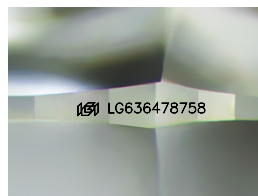
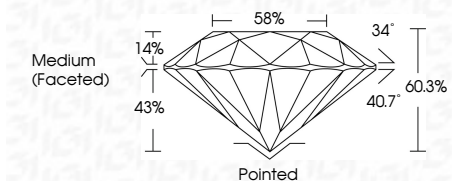
**GRADING RESULTS**

Carat Weight **3.74 CARATS**

Color Grade **E**

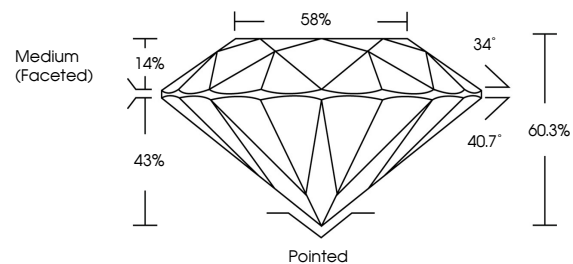
Clarity Grade **VS 1**

Cut Grade **IDEAL**

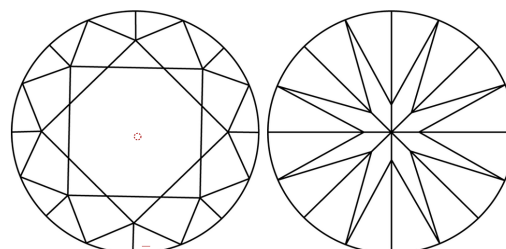


Sample Image Used

**PROPORTIONS**



**CLARITY CHARACTERISTICS**



**KEY TO SYMBOLS**

Red symbols indicate internal characteristics.  
Green symbols indicate external characteristics.

**COLOR**

D E F G H I J Faint Very Light Light

**CLARITY**

IF	VS <sup>1-2</sup>	VS <sup>1-2</sup>	SI <sup>1-2</sup>	I <sup>1-3</sup>
Internally Flawless	Very Very Slightly Included	Very Slightly Included	Slightly Included	Included

**ADDITIONAL GRADING INFORMATION**

Polish **EXCELLENT**

Symmetry **EXCELLENT**

Fluorescence **NONE**

Inscription(s) **IGI LG636478758**

Comments: This Laboratory Grown Diamond was created by Chemical Vapor Deposition (CVD) growth process. Type IIa



**IGI**

May 28, 2024  
IGI Report No LG636478758  
ROUND BRILLIANT

10.01 - 10.04 X 6.04 MM

3.74 CARATS  
E

Color Grade  
VS 1

Clarity Grade  
IDEAL

Depth  
60.3%

Table  
14%

Girdle  
88%

Medium (Faceted)

Pointed  
EXCELLENT  
EXCELLENT  
NONE

Cut Grade  
IDEAL

IGI LG636478758

Comments: This Laboratory Grown Diamond was created by Chemical Vapor Deposition (CVD) growth process. Type IIa