



ELECTRONIC COPY

LABORATORY GROWN DIAMOND REPORT

May 27, 2024  
IGI Report Number LG636478935  
Description LABORATORY GROWN DIAMOND  
Shape and Cutting Style PRINCESS CUT  
Measurements 6.98 X 6.74 X 4.93 MM

GRADING RESULTS

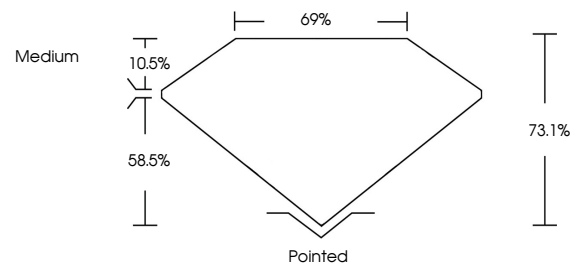
Carat Weight 2.01 CARATS  
Color Grade F  
Clarity Grade VVS 2

ADDITIONAL GRADING INFORMATION

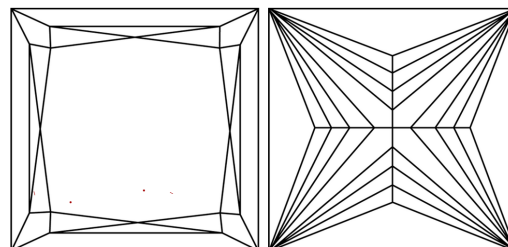
Polish EXCELLENT  
Symmetry EXCELLENT  
Fluorescence NONE  
Inscription(s) IGI LG636478935

Comments: This Laboratory Grown Diamond was created by Chemical Vapor Deposition (CVD) growth process.  
Type IIa

PROPORTIONS

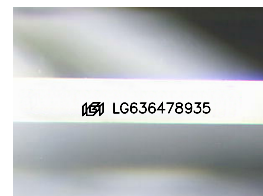


CLARITY CHARACTERISTICS



KEY TO SYMBOLS

Red symbols indicate internal characteristics.  
Green symbols indicate external characteristics.



Sample Image Used

COLOR

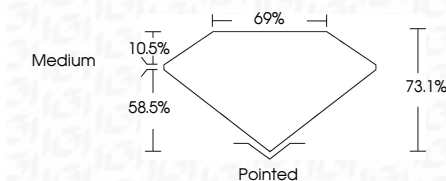
D E F G H I J Faint Very Light Light

CLARITY

IF VS 1-2 VS 1-2 SI 1-2 I 1-3  
Internally Flawless Very Very Slightly Included Very Slightly Included Slightly Included Included



May 27, 2024  
IGI Report Number LG636478935  
Description LABORATORY GROWN DIAMOND  
Shape and Cutting Style PRINCESS CUT  
Measurements 6.98 X 6.74 X 4.93 MM  
GRADING RESULTS  
Carat Weight 2.01 CARATS  
Color Grade F  
Clarity Grade VVS 2



ADDITIONAL GRADING INFORMATION

Polish EXCELLENT  
Symmetry EXCELLENT  
Fluorescence NONE  
Inscription(s) IGI LG636478935  
Comments: This Laboratory Grown Diamond was created by Chemical Vapor Deposition (CVD) growth process.  
Type IIa



IGI



May 27, 2024  
IGI Report No. LG636478935  
PRINCESS CUT  
6.98 X 6.74 X 4.93 MM  
2.01 CARATS  
F  
Color Grade  
VVS 2  
Clarity Grade  
73.1%  
Depth  
69%  
Table  
Medium  
Grades  
Pointed  
Culet  
EXCELLENT  
Polish  
EXCELLENT  
Symmetry  
NONE  
Fluorescence  
Inscription(s)  
IGI LG636478935

Comments: This Laboratory Grown Diamond was created by Chemical Vapor Deposition (CVD) growth process.  
Type IIa