



ELECTRONIC COPY

LABORATORY GROWN DIAMOND REPORT

May 25, 2024 IGI Report Number LG636479967 Description LABORATORY GROWN DIAMOND Shape and Cutting Style PRINCESS CUT Measurements 7.47 X 7.46 X 5.25 MM

GRADING RESULTS

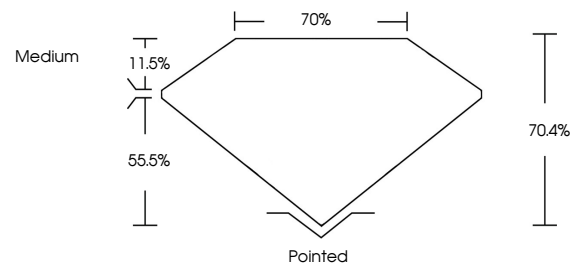
Carat Weight 2.42 CARATS Color Grade H Clarity Grade VVS 2

ADDITIONAL GRADING INFORMATION

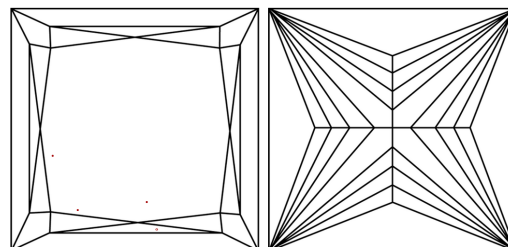
Polish EXCELLENT Symmetry EXCELLENT Fluorescence NONE Inscription(s) IGI LG636479967

Comments: This Laboratory Grown Diamond was created by Chemical Vapor Deposition (CVD) growth process. Type IIa

PROPORTIONS

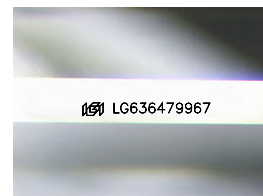


CLARITY CHARACTERISTICS



KEY TO SYMBOLS

Red symbols indicate internal characteristics. Green symbols indicate external characteristics.



Sample Image Used

COLOR

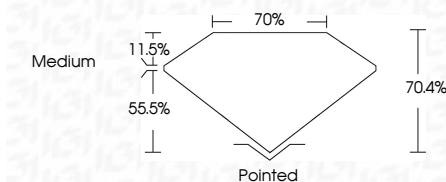
D E F G H I J Faint Very Light Light

CLARITY

IF VVS 1-2 VS 1-2 SI 1-2 I 1-3 Internally Flawless Very Very Slightly Included Very Slightly Included Slightly Included Included



May 25, 2024 IGI Report Number LG636479967 Description LABORATORY GROWN DIAMOND Shape and Cutting Style PRINCESS CUT Measurements 7.47 X 7.46 X 5.25 MM GRADING RESULTS Carat Weight 2.42 CARATS Color Grade H Clarity Grade VVS 2



ADDITIONAL GRADING INFORMATION

Polish EXCELLENT Symmetry EXCELLENT Fluorescence NONE Inscription(s) IGI LG636479967 Comments: This Laboratory Grown Diamond was created by Chemical Vapor Deposition (CVD) growth process. Type IIa



IGI



May 25, 2024 IGI Report No. LG636479967 PRINCESS CUT 2.42 CARATS H VVS 2 7.47 X 7.46 X 5.25 MM Color Grade H Clarity Grade VVS 2 Table 70.4% Girdle 70% Medium Pointed EXCELLENT EXCELLENT NONE NONE IGI LG636479967 Comments: This Laboratory Grown Diamond was created by Chemical Vapor Deposition (CVD) growth process. Type IIa