



ELECTRONIC COPY

LABORATORY GROWN DIAMOND REPORT

May 27, 2024
IGI Report Number LG636480053
Description LABORATORY GROWN DIAMOND
Shape and Cutting Style EMERALD CUT
Measurements 8.17 X 6.12 X 4.24 MM

GRADING RESULTS

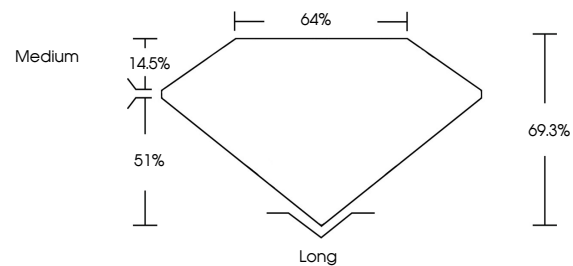
Carat Weight 2.05 CARATS
Color Grade G
Clarity Grade VVS 2

ADDITIONAL GRADING INFORMATION

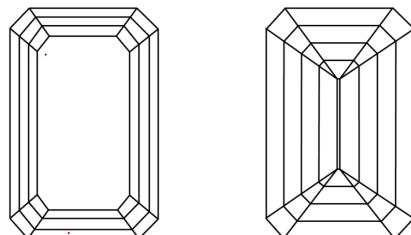
Polish EXCELLENT
Symmetry EXCELLENT
Fluorescence NONE
Inscription(s) IGI LG636480053

Comments: This Laboratory Grown Diamond was created by Chemical Vapor Deposition (CVD) growth process. Type IIa

PROPORTIONS

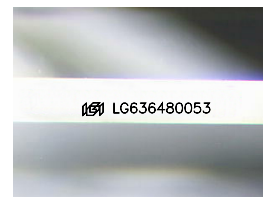


CLARITY CHARACTERISTICS



KEY TO SYMBOLS

Red symbols indicate internal characteristics. Green symbols indicate external characteristics.



Sample Image Used

COLOR

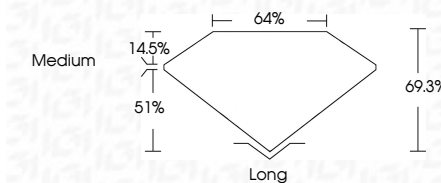
D E F G H I J Faint Very Light Light

CLARITY

IF VS 1-2 VS 1-2 SI 1-2 I 1-3
Internally Flawless Very Very Slightly Included Very Slightly Included Slightly Included Included



May 27, 2024
IGI Report Number LG636480053
Description LABORATORY GROWN DIAMOND
Shape and Cutting Style EMERALD CUT
Measurements 8.17 X 6.12 X 4.24 MM
GRADING RESULTS
Carat Weight 2.05 CARATS
Color Grade G
Clarity Grade VVS 2



ADDITIONAL GRADING INFORMATION

Polish EXCELLENT
Symmetry EXCELLENT
Fluorescence NONE
Inscription(s) IGI LG636480053
Comments: This Laboratory Grown Diamond was created by Chemical Vapor Deposition (CVD) growth process. Type IIa



IGI

Summary of report details including date, report number, measurements, grading results, and additional information.

Comments: This Laboratory Grown Diamond was created by Chemical Vapor Deposition (CVD) growth process. Type IIa