



ELECTRONIC COPY

LG636482605
Report verification at igi.org



June 3, 2024
IGI Report Number **LG636482605**
Description **LABORATORY GROWN DIAMOND**
Shape and Cutting Style **EMERALD CUT**
Measurements **9.65 X 7.70 X 4.91 MM**
GRADING RESULTS
Carat Weight **3.77 CARATS**
Color Grade **FANCY DEEP ORANGE**
Clarity Grade **VVS 2**

June 3, 2024
IGI Report Number **LG636482605**
Description **LABORATORY GROWN DIAMOND**
Shape and Cutting Style **EMERALD CUT**
Measurements **9.65 X 7.70 X 4.91 MM**

GRADING RESULTS

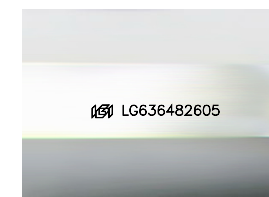
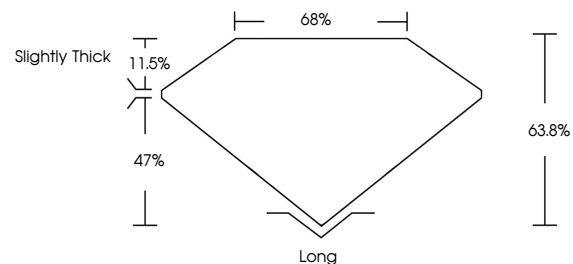
Carat Weight **3.77 CARATS**
Color Grade **FANCY DEEP ORANGE**
Clarity Grade **VVS 2**

ADDITIONAL GRADING INFORMATION

Polish **EXCELLENT**
Symmetry **EXCELLENT**
Fluorescence **NONE**
Inscription(s) **LG636482605**

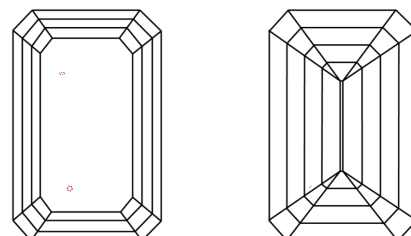
Comments: This Laboratory Grown Diamond was created by Chemical Vapor Deposition (CVD) growth process. Indications of post-growth treatment.

PROPORTIONS



Sample Image Used

CLARITY CHARACTERISTICS



KEY TO SYMBOLS

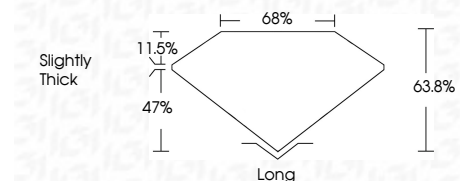
Red symbols indicate internal characteristics.
Green symbols indicate external characteristics.

COLOR

D E F G H I J Faint Very Light Light

CLARITY

IF	VVS ¹⁻²	VS ¹⁻²	SI ¹⁻²	I ¹⁻³
Internally Flawless	Very Very Slightly Included	Very Slightly Included	Slightly Included	Included



ADDITIONAL GRADING INFORMATION

Polish **EXCELLENT**
Symmetry **EXCELLENT**
Fluorescence **NONE**
Inscription(s) **LG636482605**
Comments: This Laboratory Grown Diamond was created by Chemical Vapor Deposition (CVD) growth process. Indications of post-growth treatment.



IGI



June 3, 2024
IGI Report No. **LG636482605**
EMERALD CUT
Carat Weight **3.77 CARATS**
Color Grade **FANCY DEEP ORANGE**
Clarity Grade **VVS 2**
Depth **47.0%**
Table **11.5%**
Girdle **Slightly Thick**
Culet **Long**
Polish **EXCELLENT**
Symmetry **EXCELLENT**
Fluorescence **NONE**
Inscription(s) **LG636482605**
Comments: This Laboratory Grown Diamond was created by Chemical Vapor Deposition (CVD) growth process. Indications of post-growth treatment.