



ELECTRONIC COPY

LABORATORY GROWN DIAMOND REPORT

June 3, 2024  
IGI Report Number LG636482615  
Description LABORATORY GROWN DIAMOND  
Shape and Cutting Style CUT CORNERED SQUARE MODIFIED BRILLIANT  
Measurements 8.91 X 8.85 X 5.75 MM

GRADING RESULTS

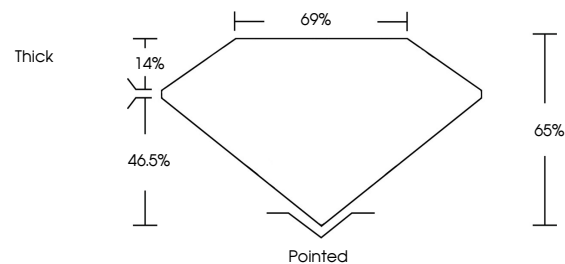
Carat Weight 4.32 CARATS  
Color Grade E  
Clarity Grade VVS 2

ADDITIONAL GRADING INFORMATION

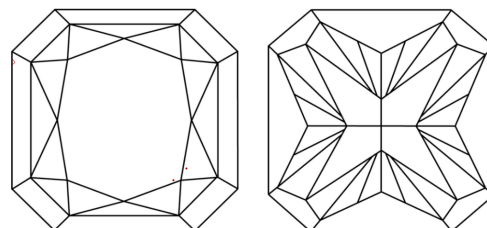
Polish EXCELLENT  
Symmetry EXCELLENT  
Fluorescence NONE  
Inscription(s) IGI LG636482615

Comments: As Grown - No indication of post-growth treatment.  
This Laboratory Grown Diamond was created by Chemical Vapor Deposition (CVD) growth process. Type IIa

PROPORTIONS

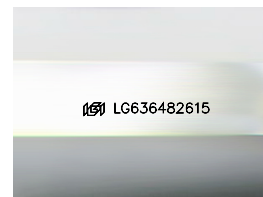


CLARITY CHARACTERISTICS



KEY TO SYMBOLS

Red symbols indicate internal characteristics.  
Green symbols indicate external characteristics.



Sample Image Used

COLOR

D E F G H I J Faint Very Light Light

CLARITY

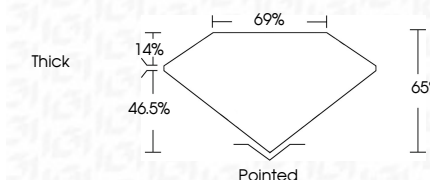
IF VVS 1-2 VS 1-2 SI 1-2 I 1-3  
Internally Flawless Very Very Slightly Included Very Slightly Included Slightly Included Included



June 3, 2024  
IGI Report Number LG636482615  
Description LABORATORY GROWN DIAMOND  
Shape and Cutting Style CUT CORNERED SQUARE MODIFIED BRILLIANT  
Measurements 8.91 X 8.85 X 5.75 MM

GRADING RESULTS

Carat Weight 4.32 CARATS  
Color Grade E  
Clarity Grade VVS 2



ADDITIONAL GRADING INFORMATION

Polish EXCELLENT  
Symmetry EXCELLENT  
Fluorescence NONE  
Inscription(s) IGI LG636482615  
Comments: As Grown - No indication of post-growth treatment.  
This Laboratory Grown Diamond was created by Chemical Vapor Deposition (CVD) growth process. Type IIa



IGI

June 3, 2024  
IGI Report No LG636482615  
CUT CORNERED SQUARE MODIFIED BRILLIANT  
8.91 X 8.85 X 5.75 MM  
4.32 CARATS E  
Color Grade VVS 2  
Depth 65%  
Table 69%  
Girdle Thick  
Pointed  
Polish EXCELLENT  
Symmetry EXCELLENT  
Fluorescence NONE  
Inscription(s) IGI LG636482615

Comments: As Grown - No indication of post-growth treatment.  
This Laboratory Grown Diamond was created by Chemical Vapor Deposition (CVD) growth process. Type IIa