



ELECTRONIC COPY

LABORATORY GROWN DIAMOND REPORT

May 28, 2024
IGI Report Number LG636485797
Description LABORATORY GROWN DIAMOND
Shape and Cutting Style PRINCESS CUT
Measurements 6.15 X 6.00 X 4.10 MM

GRADING RESULTS

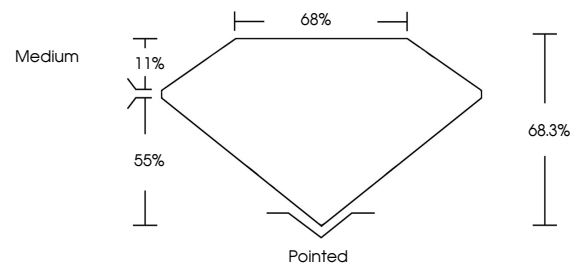
Carat Weight 1.27 CARAT
Color Grade E
Clarity Grade VS 2

ADDITIONAL GRADING INFORMATION

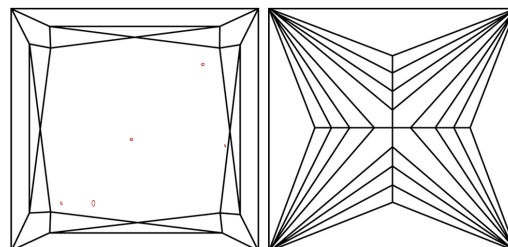
Polish EXCELLENT
Symmetry EXCELLENT
Fluorescence NONE
Inscription(s) IGI LG636485797

Comments: This Laboratory Grown Diamond was created by Chemical Vapor Deposition (CVD) growth process. Type IIa

PROPORTIONS

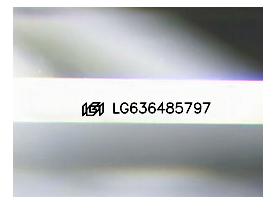


CLARITY CHARACTERISTICS



KEY TO SYMBOLS

Red symbols indicate internal characteristics.
Green symbols indicate external characteristics.



Sample Image Used

COLOR

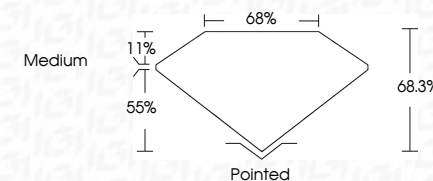
D E F G H I J Faint Very Light Light

CLARITY

Table with columns for clarity grades: IF, VS 1-2, VS 1-2, SI 1-2, I 1-3. Below are descriptions: Internally Flawless, Very Very Slightly Included, Very Slightly Included, Slightly Included, Included.



May 28, 2024
IGI Report Number LG636485797
Description LABORATORY GROWN DIAMOND
Shape and Cutting Style PRINCESS CUT
Measurements 6.15 X 6.00 X 4.10 MM
GRADING RESULTS
Carat Weight 1.27 CARAT
Color Grade E
Clarity Grade VS 2



ADDITIONAL GRADING INFORMATION

Polish EXCELLENT
Symmetry EXCELLENT
Fluorescence NONE
Inscription(s) IGI LG636485797
Comments: This Laboratory Grown Diamond was created by Chemical Vapor Deposition (CVD) growth process. Type IIa



IGI



May 28, 2024
IGI Report No. LG636485797
PRINCESS CUT
6.15 X 6.00 X 4.10 MM
1.27 CARAT E
Color Grade VS 2
Depth 68.3%
Table 55%
Girdle Medium
Culet Pointed
Polish EXCELLENT
Symmetry EXCELLENT
Fluorescence NONE
Inscription(s) IGI LG636485797
Comments: This Laboratory Grown Diamond was created by Chemical Vapor Deposition (CVD) growth process. Type IIa