



ELECTRONIC COPY

LG636486317 Report verification at igi.org

LABORATORY GROWN DIAMOND REPORT

May 30, 2024
IGI Report Number LG636486317
Description LABORATORY GROWN DIAMOND
Shape and Cutting Style EMERALD CUT
Measurements 8.69 X 6.08 X 4.14 MM

GRADING RESULTS

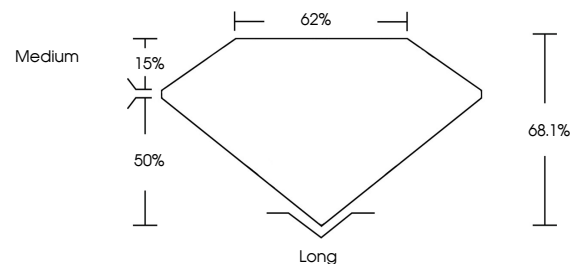
Carat Weight 2.11 CARATS
Color Grade F
Clarity Grade VVS 2

ADDITIONAL GRADING INFORMATION

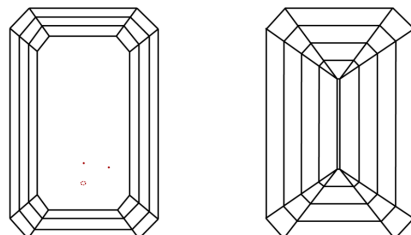
Polish EXCELLENT
Symmetry EXCELLENT
Fluorescence NONE
Inscription(s) IGI LG636486317

Comments: This Laboratory Grown Diamond was created by Chemical Vapor Deposition (CVD) growth process. Type IIa

PROPORTIONS

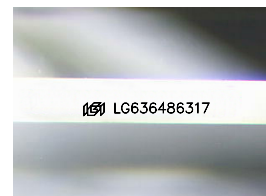


CLARITY CHARACTERISTICS



KEY TO SYMBOLS

Red symbols indicate internal characteristics. Green symbols indicate external characteristics.



Sample Image Used

COLOR

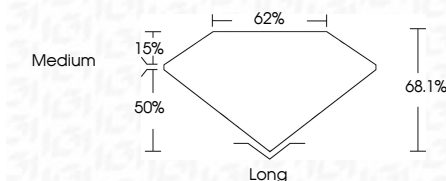
D E F G H I J Faint Very Light Light

CLARITY

IF VVS 1-2 VS 1-2 SI 1-2 I 1-3
Internally Flawless Very Very Slightly Included Very Slightly Included Slightly Included Included



May 30, 2024
IGI Report Number LG636486317
Description LABORATORY GROWN DIAMOND
Shape and Cutting Style EMERALD CUT
Measurements 8.69 X 6.08 X 4.14 MM
GRADING RESULTS
Carat Weight 2.11 CARATS
Color Grade F
Clarity Grade VVS 2



ADDITIONAL GRADING INFORMATION

Polish EXCELLENT
Symmetry EXCELLENT
Fluorescence NONE
Inscription(s) IGI LG636486317
Comments: This Laboratory Grown Diamond was created by Chemical Vapor Deposition (CVD) growth process. Type IIa



IGI



May 30, 2024
IGI Report No. LG636486317
EMERALD CUT
2.11 CARATS F
Carat Weight VVS 2
Color Grade 68.1%
Depth 62%
Table Medium
Girdle Long
Culet EXCELLENT
Polish EXCELLENT
Symmetry NONE
Fluorescence NONE
Inscription(s) IGI LG636486317

Comments: This Laboratory Grown Diamond was created by Chemical Vapor Deposition (CVD) growth process. Type IIa