



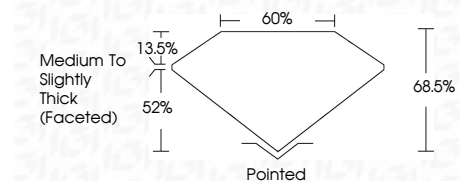
**ELECTRONIC COPY**

LG636490872  
Report verification at [igi.org](http://igi.org)



May 30, 2024  
IGI Report Number **LG636490872**  
Description **LABORATORY GROWN DIAMOND**  
Shape and Cutting Style **SQUARE CUSHION BRILLIANT**  
Measurements **5.62 X 5.37 X 3.68 MM**

**GRADING RESULTS**  
Carat Weight **1.02 CARAT**  
Color Grade **I**  
Clarity Grade **VVS 2**

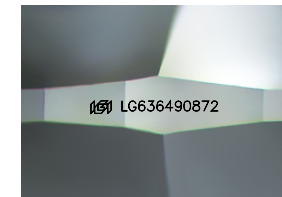
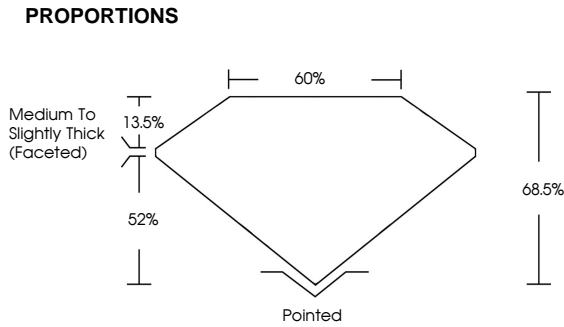


**ADDITIONAL GRADING INFORMATION**  
Polish **VERY GOOD**  
Symmetry **VERY GOOD**  
Fluorescence **NONE**  
Inscription(s) **IGI LG636490872**  
Comments: This Laboratory Grown Diamond was created by Chemical Vapor Deposition (CVD) growth process.  
Type IIa



May 30, 2024  
IGI Report No **LG636490872**  
**SQUARE CUSHION BRILLIANT**  
5.62 X 5.37 X 3.68 MM  
1.02 CARAT  
Color Grade **I**  
Clarity Grade **VVS 2**  
Depth **68.5%**  
Table **60%**  
Girdle **Medium to Slightly Thick (Faceted)**  
Culet **Pointed**  
Polish **VERY GOOD**  
Symmetry **VERY GOOD**  
Fluorescence **NONE**  
Inscription(s) **IGI LG636490872**  
Comments: This Laboratory Grown Diamond was created by Chemical Vapor Deposition (CVD) growth process.  
Type IIa

May 30, 2024  
IGI Report Number **LG636490872**  
Description **LABORATORY GROWN DIAMOND**  
Shape and Cutting Style **SQUARE CUSHION BRILLIANT**  
Measurements **5.62 X 5.37 X 3.68 MM**  
**GRADING RESULTS**  
Carat Weight **1.02 CARAT**  
Color Grade **I**  
Clarity Grade **VVS 2**  
**ADDITIONAL GRADING INFORMATION**  
Polish **VERY GOOD**  
Symmetry **VERY GOOD**  
Fluorescence **NONE**  
Inscription(s) **IGI LG636490872**  
Comments: This Laboratory Grown Diamond was created by Chemical Vapor Deposition (CVD) growth process.  
Type IIa



Sample Image Used

**COLOR**

D	E	F	G	H	I	J	Faint	Very Light	Light
---	---	---	---	---	---	---	-------	------------	-------

**CLARITY**

IF	VS <sup>1-2</sup>	VS <sup>1-2</sup>	SI <sup>1-2</sup>	I <sup>1-3</sup>
Internally Flawless	Very Very Slightly Included	Very Slightly Included	Slightly Included	Included

