



**ELECTRONIC COPY**

LG636490895  
Report verification at [igi.org](http://igi.org)



May 28, 2024

IGI Report Number **LG636490895**

Description **LABORATORY GROWN DIAMOND**

Shape and Cutting Style **CUSHION BRILLIANT**

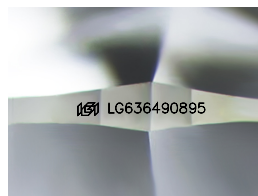
Measurements **8.32 X 6.17 X 4.16 MM**

**GRADING RESULTS**

Carat Weight **1.81 CARAT**

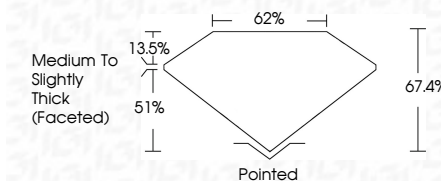
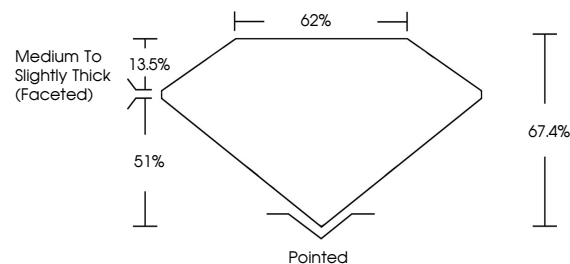
Color Grade **E**

Clarity Grade **VS 1**



Sample Image Used

**PROPORTIONS**



**ADDITIONAL GRADING INFORMATION**

Polish **EXCELLENT**

Symmetry **VERY GOOD**

Fluorescence **NONE**

Inscription(s) **IGI LG636490895**

Comments: This Laboratory Grown Diamond was created by Chemical Vapor Deposition (CVD) growth process.  
Type IIa

**COLOR**

D E F G H I J Faint Very Light Light

**CLARITY**

IF	VS <sup>1-2</sup>	VS <sup>1-2</sup>	SI <sup>1-2</sup>	I <sup>1-3</sup>
Internally Flawless	Very Very Slightly Included	Very Slightly Included	Slightly Included	Included



**IGI**

May 28, 2024  
IGI Report No LG636490895  
**CUSHION BRILLIANT**  
8.32 X 6.17 X 4.16 MM  
Carat Weight 1.81 CARAT  
Color Grade E  
Clarity Grade VS 1  
Depth 67.4%  
Table 62%  
Girdle Medium to Slightly Thick (Faceted)  
Culet Pointed  
Polish EXCELLENT  
Symmetry VERY GOOD  
Fluorescence NONE  
Inscription(s) IGI LG636490895

Comments: This Laboratory Grown Diamond was created by Chemical Vapor Deposition (CVD) growth process.  
Type IIa