



ELECTRONIC COPY

LG636490932
Report verification at igi.org



May 31, 2024

IGI Report Number **LG636490932**

Description **LABORATORY GROWN DIAMOND**

Shape and Cutting Style **SQUARE CUSHION BRILLIANT**

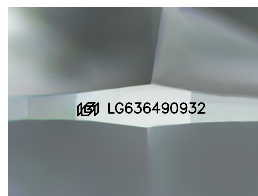
Measurements **7.40 X 7.20 X 4.61 MM**

GRADING RESULTS

Carat Weight **2.01 CARATS**

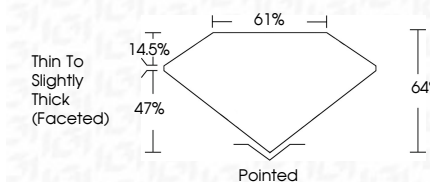
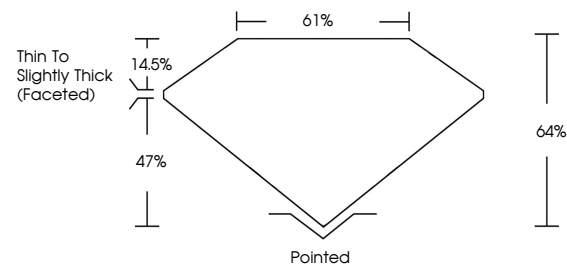
Color Grade **H**

Clarity Grade **VVS 2**



Sample Image Used

PROPORTIONS



ADDITIONAL GRADING INFORMATION

Polish **EXCELLENT**

Symmetry **EXCELLENT**

Fluorescence **NONE**

Inscription(s) **IGI LG636490932**

Comments: This Laboratory Grown Diamond was created by Chemical Vapor Deposition (CVD) growth process.
Type IIa

COLOR

D E F G H I J Faint Very Light Light

CLARITY

IF	VS ¹⁻²	VS ¹⁻²	SI ¹⁻²	I ¹⁻³
Internally Flawless	Very Very Slightly Included	Very Slightly Included	Slightly Included	Included



May 31, 2024
IGI Report No **LG636490932**
SQUARE CUSHION BRILLIANT

7.40 X 7.20 X 4.61 MM

Carat Weight	2.01 CARATS
Color Grade	H
Clarity Grade	VVS 2
Depth	64%
Table	61%
Graile	Thin To Slightly Thick (Faceted)
Culet	Pointed
Polish	EXCELLENT
Symmetry	EXCELLENT
Fluorescence	NONE
Inscription(s)	IGI LG636490932

Comments: This Laboratory Grown Diamond was created by Chemical Vapor Deposition (CVD) growth process.
Type IIa



IGI