



ELECTRONIC COPY

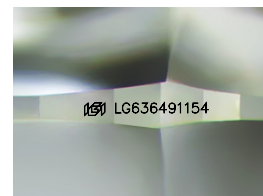
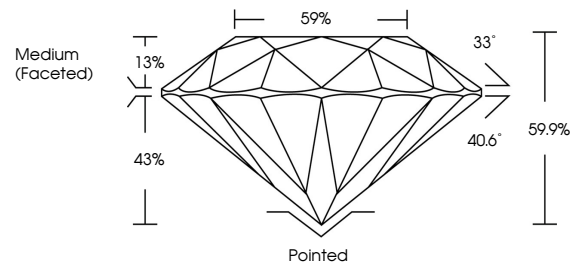
LG636491154 Report verification at igi.org



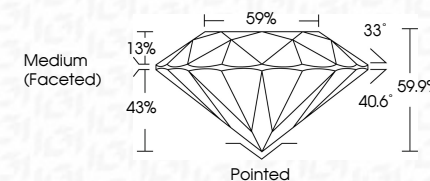
May 25, 2024 IGI Report Number LG636491154 Description LABORATORY GROWN DIAMOND Shape and Cutting Style ROUND BRILLIANT Measurements 9.35 - 9.41 X 5.61 MM GRADING RESULTS Carat Weight 3.02 CARATS Color Grade F Clarity Grade VS 1 Cut Grade IDEAL

May 25, 2024 IGI Report Number LG636491154 Description LABORATORY GROWN DIAMOND Shape and Cutting Style ROUND BRILLIANT Measurements 9.35 - 9.41 X 5.61 MM GRADING RESULTS Carat Weight 3.02 CARATS Color Grade F Clarity Grade VS 1 Cut Grade IDEAL

PROPORTIONS



Sample Image Used



ADDITIONAL GRADING INFORMATION

Polish EXCELLENT Symmetry EXCELLENT Fluorescence NONE Inscription(s) IGI LG636491154

Comments: This Laboratory Grown Diamond was created by Chemical Vapor Deposition (CVD) growth process. Type IIa

ADDITIONAL GRADING INFORMATION

Polish EXCELLENT Symmetry EXCELLENT Fluorescence NONE Inscription(s) IGI LG636491154 Comments: This Laboratory Grown Diamond was created by Chemical Vapor Deposition (CVD) growth process. Type IIa

COLOR

D E F G H I J Faint Very Light Light

CLARITY

IF VS 1-2 VS 1-2 SI 1-2 I 1-3 Internally Flawless Very Very Slightly Included Very Slightly Included Slightly Included Included



IGI

May 25, 2024 IGI Report No LG636491154 ROUND BRILLIANT 9.35 - 9.41 X 5.61 MM 3.02 CARATS F VS 1 IDEAL 59.9% 59% Medium (Faceted) Pointed EXCELLENT EXCELLENT NONE NONE IGI LG636491154 Comments: This Laboratory Grown Diamond was created by Chemical Vapor Deposition (CVD) growth process. Type IIa