



ELECTRONIC COPY

LG636491182
Report verification at igi.org



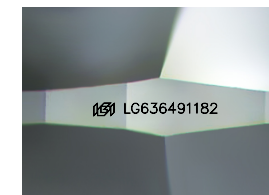
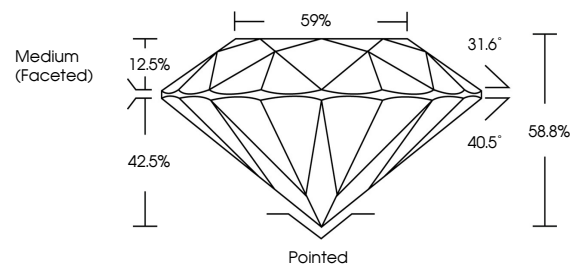
May 27, 2024
IGI Report Number **LG636491182**
Description **LABORATORY GROWN DIAMOND**
Shape and Cutting Style **ROUND BRILLIANT**
Measurements **9.44 - 9.48 X 5.56 MM**
GRADING RESULTS
Carat Weight **3.02 CARATS**
Color Grade **F**
Clarity Grade **VS 1**
Cut Grade **EXCELLENT**

May 27, 2024
IGI Report Number **LG636491182**
Description **LABORATORY GROWN DIAMOND**
Shape and Cutting Style **ROUND BRILLIANT**
Measurements **9.44 - 9.48 X 5.56 MM**
GRADING RESULTS
Carat Weight **3.02 CARATS**
Color Grade **F**
Clarity Grade **VS 1**
Cut Grade **EXCELLENT**

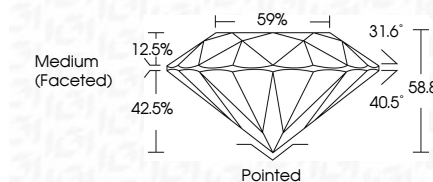
ADDITIONAL GRADING INFORMATION
Polish **EXCELLENT**
Symmetry **EXCELLENT**
Fluorescence **NONE**
Inscription(s) **LG636491182**

Comments: This Laboratory Grown Diamond was created by Chemical Vapor Deposition (CVD) growth process. Type IIa

PROPORTIONS



Sample Image Used



COLOR

D E F G H I J Faint Very Light Light

CLARITY

IF	VS ¹⁻²	VS ¹⁻²	SI ¹⁻²	I ¹⁻³
Internally Flawless	Very Very Slightly Included	Very Slightly Included	Slightly Included	Included

ADDITIONAL GRADING INFORMATION

Polish **EXCELLENT**
Symmetry **EXCELLENT**
Fluorescence **NONE**
Inscription(s) **LG636491182**
Comments: This Laboratory Grown Diamond was created by Chemical Vapor Deposition (CVD) growth process. Type IIa



IGI



May 27, 2024
IGI Report No **LG636491182**
ROUND BRILLIANT
9.44 - 9.48 X 5.56 MM
Carat Weight **3.02 CARATS**
Color Grade **F**
Clarity Grade **VS 1**
Depth **EXCELLENT**
Table **58.8%**
Girdle **Medium (Faceted)**
Culet **Pointed**
Polish **EXCELLENT**
Symmetry **EXCELLENT**
Fluorescence **NONE**
Inscription(s) **LG636491182**
Comments: This Laboratory Grown Diamond was created by Chemical Vapor Deposition (CVD) growth process. Type IIa