



ELECTRONIC COPY

LG636491195
Report verification at igi.org



May 25, 2024

IGI Report Number **LG636491195**

Description **LABORATORY GROWN DIAMOND**

Shape and Cutting Style **ROUND BRILLIANT**

Measurements **9.41 - 9.45 X 5.62 MM**

GRADING RESULTS

Carat Weight **3.06 CARATS**

Color Grade **F**

Clarity Grade **VS 2**

Cut Grade **IDEAL**

May 25, 2024

IGI Report Number **LG636491195**

Description **LABORATORY GROWN DIAMOND**

Shape and Cutting Style **ROUND BRILLIANT**

Measurements **9.41 - 9.45 X 5.62 MM**

GRADING RESULTS

Carat Weight **3.06 CARATS**

Color Grade **F**

Clarity Grade **VS 2**

Cut Grade **IDEAL**

ADDITIONAL GRADING INFORMATION

Polish **EXCELLENT**

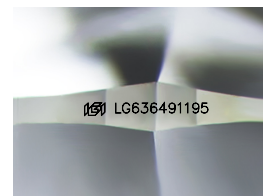
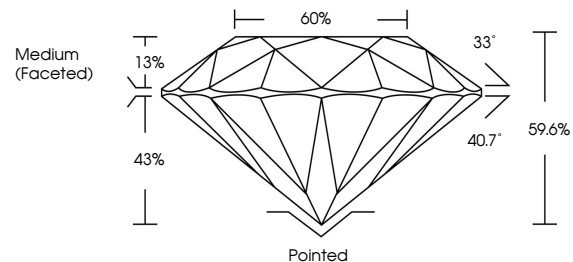
Symmetry **EXCELLENT**

Fluorescence **NONE**

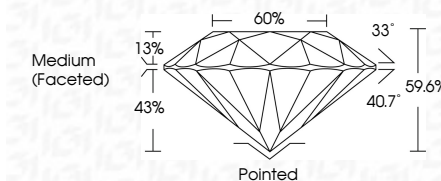
Inscription(s) **LG636491195**

Comments: This Laboratory Grown Diamond was created by Chemical Vapor Deposition (CVD) growth process.
Type IIa

PROPORTIONS



Sample Image Used



ADDITIONAL GRADING INFORMATION

Polish **EXCELLENT**

Symmetry **EXCELLENT**

Fluorescence **NONE**

Inscription(s) **LG636491195**

Comments: This Laboratory Grown Diamond was created by Chemical Vapor Deposition (CVD) growth process.
Type IIa

COLOR

D E F G H I J Faint Very Light Light

CLARITY

IF VS¹⁻² VS¹⁻² SI¹⁻² I¹⁻³

Internally Flawless Very Very Slightly Included Very Slightly Included Slightly Included Included



IGI

May 25, 2024	IGI Report No LG636491195	3.06 CARATS	F	Pointed	EXCELLENT	EXCELLENT	NONE	None	None
ROUND BRILLIANT	9.41 - 9.45 X 5.62 MM	Color Grade	VS 2	Depth	IDEAL	59.6%	60%	Medium (Faceted)	IGI LG636491195
		Clarity Grade	VS 2	Cut Grade	IDEAL	59.6%	60%	Medium (Faceted)	IGI LG636491195
		Table		Girdle					
		Culet		Polish					
		Symmetry		Symmetry					
		Fluorescence		Fluorescence					
		Inscriptions(s)		Inscriptions(s)					

Comments: This Laboratory Grown Diamond was created by Chemical Vapor Deposition (CVD) growth process.
Type IIa