



ELECTRONIC COPY

LG636491222
Report verification at igi.org



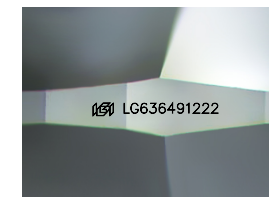
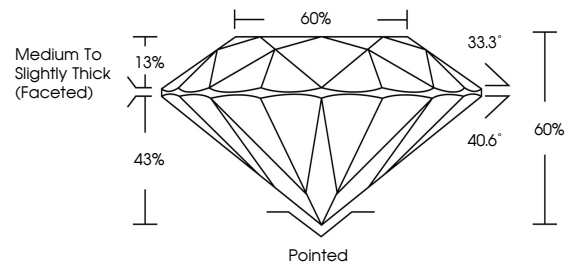
June 6, 2024
IGI Report Number **LG636491222**
Description **LABORATORY GROWN DIAMOND**
Shape and Cutting Style **ROUND BRILLIANT**
Measurements **9.49 - 9.57 X 5.72 MM**
GRADING RESULTS
Carat Weight **3.21 CARATS**
Color Grade **F**
Clarity Grade **VS 2**
Cut Grade **IDEAL**

June 6, 2024
IGI Report Number **LG636491222**
Description **LABORATORY GROWN DIAMOND**
Shape and Cutting Style **ROUND BRILLIANT**
Measurements **9.49 - 9.57 X 5.72 MM**
GRADING RESULTS
Carat Weight **3.21 CARATS**
Color Grade **F**
Clarity Grade **VS 2**
Cut Grade **IDEAL**

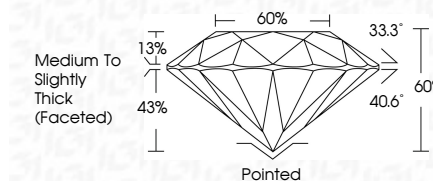
ADDITIONAL GRADING INFORMATION
Polish **EXCELLENT**
Symmetry **EXCELLENT**
Fluorescence **NONE**
Inscription(s) **IGI LG636491222**

Comments: This Laboratory Grown Diamond was created by Chemical Vapor Deposition (CVD) growth process. Type IIa

PROPORTIONS



Sample Image Used



COLOR

D E F G H I J Faint Very Light Light

CLARITY

IF VS¹⁻² VS¹⁻² SI¹⁻² I¹⁻³
Internally Flawless Very Very Slightly Included Very Slightly Included Slightly Included Included

ADDITIONAL GRADING INFORMATION

Polish **EXCELLENT**
Symmetry **EXCELLENT**
Fluorescence **NONE**
Inscription(s) **IGI LG636491222**
Comments: This Laboratory Grown Diamond was created by Chemical Vapor Deposition (CVD) growth process. Type IIa



IGI

June 6, 2024
IGI Report No. **LG636491222**
ROUND BRILLIANT
9.49 - 9.57 X 5.72 MM
Carat Weight **3.21 CARATS**
Color Grade **F**
Clarity Grade **VS 2**
Depth **IDEAL**
Table **60%**
Girdle **60%**
Medium To Slightly Thick (Faceted)
Culet **Pointed**
Polish **EXCELLENT**
Symmetry **EXCELLENT**
Fluorescence **NONE**
Inscription(s) **IGI LG636491222**
Comments: This Laboratory Grown Diamond was created by Chemical Vapor Deposition (CVD) growth process. Type IIa