



ELECTRONIC COPY

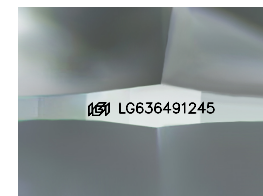
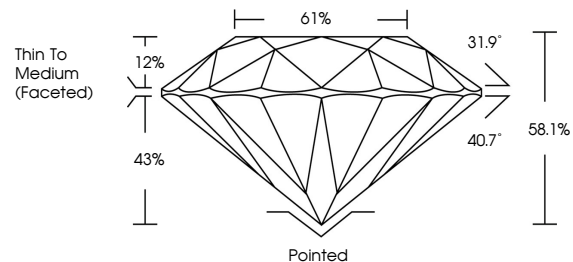
LG636491245 Report verification at igi.org



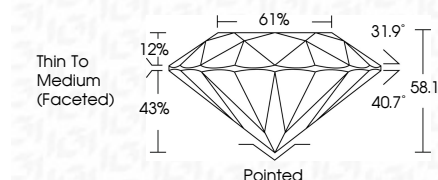
May 27, 2024 IGI Report Number LG636491245 Description LABORATORY GROWN DIAMOND Shape and Cutting Style ROUND BRILLIANT Measurements 9.46 - 9.51 X 5.50 MM GRADING RESULTS Carat Weight 3.01 CARATS Color Grade F Clarity Grade VS 1 Cut Grade EXCELLENT

May 27, 2024 IGI Report Number LG636491245 Description LABORATORY GROWN DIAMOND Shape and Cutting Style ROUND BRILLIANT Measurements 9.46 - 9.51 X 5.50 MM GRADING RESULTS Carat Weight 3.01 CARATS Color Grade F Clarity Grade VS 1 Cut Grade EXCELLENT

PROPORTIONS



Sample Image Used



ADDITIONAL GRADING INFORMATION

Polish EXCELLENT Symmetry EXCELLENT Fluorescence NONE Inscription(s) LG636491245

ADDITIONAL GRADING INFORMATION

Polish EXCELLENT Symmetry EXCELLENT Fluorescence NONE Inscription(s) LG636491245 Comments: This Laboratory Grown Diamond was created by Chemical Vapor Deposition (CVD) growth process. Type IIa

COLOR

D E F G H I J Faint Very Light Light

CLARITY

IF VS 1-2 VS 1-2 SI 1-2 I 1-3 Internally Flawless Very Very Slightly Included Very Slightly Included Slightly Included Included



IGI

May 27, 2024 IGI Report No LG636491245 ROUND BRILLIANT 9.46 - 9.51 X 5.50 MM 3.01 CARATS F VS 1 EXCELLENT 58.1% 61% Thin To Medium (Faceted) Pointed EXCELLENT EXCELLENT NONE NONE LG636491245 Comments: This Laboratory Grown Diamond was created by Chemical Vapor Deposition (CVD) growth process. Type IIa