



ELECTRONIC COPY

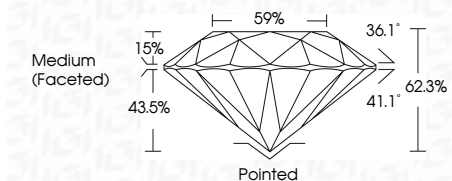
LG636491654
Report verification at igi.org



May 31, 2024
IGI Report Number LG636491654
Description LABORATORY GROWN DIAMOND
Shape and Cutting Style ROUND BRILLIANT
Measurements 6.43 - 6.48 X 4.03 MM

GRADING RESULTS

Carat Weight 1.04 CARAT
Color Grade E
Clarity Grade VS 2
Cut Grade IDEAL



ADDITIONAL GRADING INFORMATION

Polish EXCELLENT
Symmetry EXCELLENT
Fluorescence NONE
Inscription(s) LG636491654
Comments: This Laboratory Grown Diamond was created by Chemical Vapor Deposition (CVD) growth process. Type IIa



IGI

May 31, 2024
IGI Report No LG636491654
ROUND BRILLIANT
6.43 - 6.48 X 4.03 MM
1.04 CARAT
E
VS 2
IDEAL
62.3%
59%
Medium (Faceted)
Pointed
EXCELLENT
EXCELLENT
NONE
NONE
IGI LG636491654
Comments: This Laboratory Grown Diamond was created by Chemical Vapor Deposition (CVD) growth process. Type IIa

LABORATORY GROWN DIAMOND REPORT

May 31, 2024
IGI Report Number LG636491654
Description LABORATORY GROWN DIAMOND
Shape and Cutting Style ROUND BRILLIANT
Measurements 6.43 - 6.48 X 4.03 MM

GRADING RESULTS

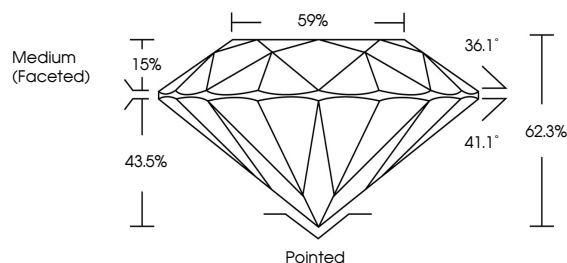
Carat Weight 1.04 CARAT
Color Grade E
Clarity Grade VS 2
Cut Grade IDEAL

ADDITIONAL GRADING INFORMATION

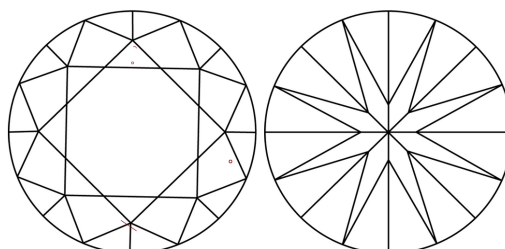
Polish EXCELLENT
Symmetry EXCELLENT
Fluorescence NONE
Inscription(s) LG636491654

Comments: This Laboratory Grown Diamond was created by Chemical Vapor Deposition (CVD) growth process. Type IIa

PROPORTIONS

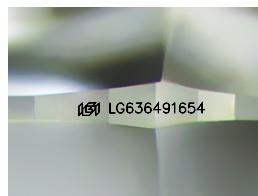


CLARITY CHARACTERISTICS



KEY TO SYMBOLS

Red symbols indicate internal characteristics.
Green symbols indicate external characteristics.



Sample Image Used

COLOR

D E F G H I J Faint Very Light Light

CLARITY

IF VS 1-2 VS 1-2 SI 1-2 I 1-3
Internally Flawless Very Very Slightly Included Very Slightly Included Slightly Included Included

