



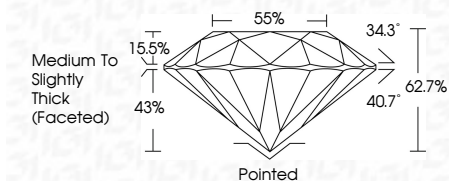
ELECTRONIC COPY

LG636492061 Report verification at igi.org



May 29, 2024 IGI Report Number LG636492061 Description LABORATORY GROWN DIAMOND Shape and Cutting Style ROUND BRILLIANT Measurements 9.13 - 9.22 X 5.74 MM

GRADING RESULTS Carat Weight 3.00 CARATS Color Grade G Clarity Grade VVS 2 Cut Grade EXCELLENT



ADDITIONAL GRADING INFORMATION Polish EXCELLENT Symmetry EXCELLENT Fluorescence NONE Inscription(s) LG636492061 Comments: This Laboratory Grown Diamond was created by Chemical Vapor Deposition (CVD) growth process. Type IIa



May 29, 2024 IGI Report No. LG636492061 ROUND BRILLIANT 9.13 - 9.22 X 5.74 MM 3.00 CARATS G VVS 2 EXCELLENT 62.7% 55% Medium To Slightly Thick (Faceted) Pointed EXCELLENT EXCELLENT NONE NONE LG636492061

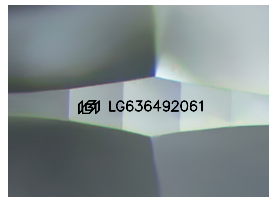
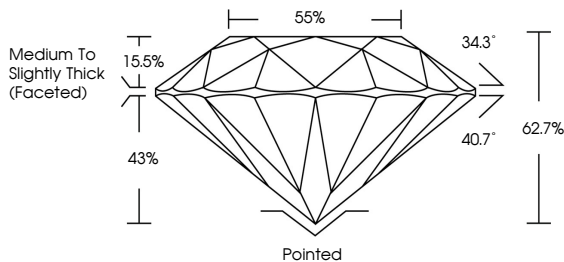
May 29, 2024 IGI Report Number LG636492061 Description LABORATORY GROWN DIAMOND Shape and Cutting Style ROUND BRILLIANT Measurements 9.13 - 9.22 X 5.74 MM

GRADING RESULTS Carat Weight 3.00 CARATS Color Grade G Clarity Grade VVS 2 Cut Grade EXCELLENT

ADDITIONAL GRADING INFORMATION Polish EXCELLENT Symmetry EXCELLENT Fluorescence NONE Inscription(s) LG636492061

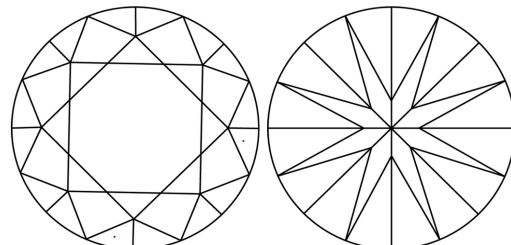
Comments: This Laboratory Grown Diamond was created by Chemical Vapor Deposition (CVD) growth process. Type IIa

PROPORTIONS



Sample Image Used

CLARITY CHARACTERISTICS



KEY TO SYMBOLS Red symbols indicate internal characteristics. Green symbols indicate external characteristics.

COLOR

D E F G H I J Faint Very Light Light

CLARITY

IF VVS 1-2 VS 1-2 SI 1-2 I 1-3 Internally Flawless Very Very Slightly Included Very Slightly Included Slightly Included Included

