



ELECTRONIC COPY

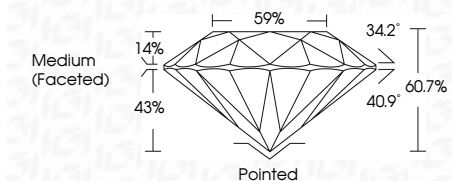
LG636493413
Report verification at igi.org



May 29, 2024
IGI Report Number LG636493413
Description LABORATORY GROWN DIAMOND
Shape and Cutting Style ROUND BRILLIANT
Measurements 8.36 - 8.39 X 5.09 MM

GRADING RESULTS

Carat Weight 2.20 CARATS
Color Grade F
Clarity Grade SI 1
Cut Grade IDEAL



ADDITIONAL GRADING INFORMATION

Polish EXCELLENT
Symmetry EXCELLENT
Fluorescence NONE
Inscription(s) LG636493413
Comments: This Laboratory Grown Diamond was created by Chemical Vapor Deposition (CVD) growth process. Type IIa



IGI

Summary table of diamond characteristics: 2.20 CARATS, F, SI 1, IDEAL, 60.7%, 59%, Medium (Faceted), EXCELLENT, EXCELLENT, NONE, LG636493413

LABORATORY GROWN DIAMOND REPORT

May 29, 2024
IGI Report Number LG636493413
Description LABORATORY GROWN DIAMOND
Shape and Cutting Style ROUND BRILLIANT
Measurements 8.36 - 8.39 X 5.09 MM

GRADING RESULTS

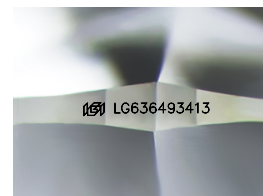
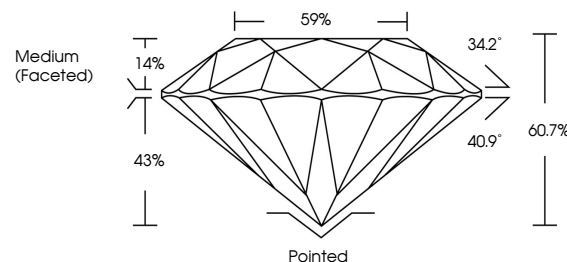
Carat Weight 2.20 CARATS
Color Grade F
Clarity Grade SI 1
Cut Grade IDEAL

ADDITIONAL GRADING INFORMATION

Polish EXCELLENT
Symmetry EXCELLENT
Fluorescence NONE
Inscription(s) LG636493413

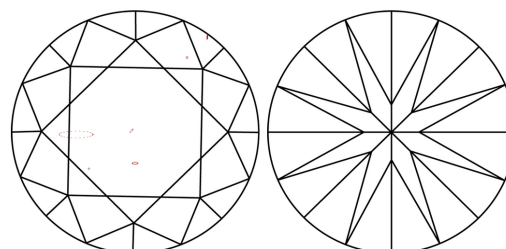
Comments: This Laboratory Grown Diamond was created by Chemical Vapor Deposition (CVD) growth process. Type IIa

PROPORTIONS



Sample Image Used

CLARITY CHARACTERISTICS



KEY TO SYMBOLS

Red symbols indicate internal characteristics.
Green symbols indicate external characteristics.

COLOR

D E F G H I J Faint Very Light Light

CLARITY

Clarity scale table: IF, VS 1-2, VS 1-2, SI 1-2, I 1-3; Internally Flawless, Very Very Slightly Included, Very Slightly Included, Slightly Included, Included