



ELECTRONIC COPY

LG636494783
Report verification at igi.org



June 4, 2024

IGI Report Number LG636494783

Description LABORATORY GROWN DIAMOND

Shape and Cutting Style EMERALD CUT

Measurements 9.49 X 5.70 X 3.38 MM

GRADING RESULTS

Carat Weight 2.01 CARATS

Color Grade FANCY VIVID BLUE

Clarity Grade VS 2

LABORATORY GROWN DIAMOND REPORT

June 4, 2024

IGI Report Number LG636494783

Description LABORATORY GROWN DIAMOND

Shape and Cutting Style EMERALD CUT

Measurements 9.49 X 5.70 X 3.38 MM

GRADING RESULTS

Carat Weight 2.01 CARATS

Color Grade FANCY VIVID BLUE

Clarity Grade VS 2

ADDITIONAL GRADING INFORMATION

Polish EXCELLENT

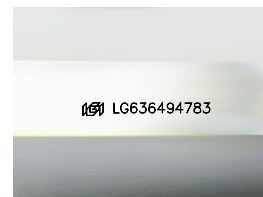
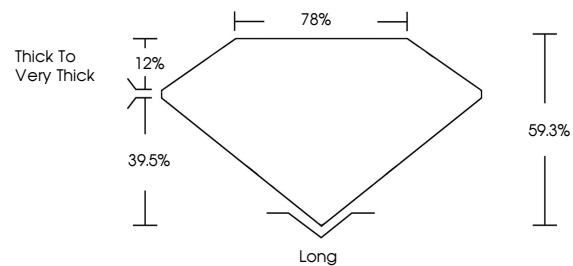
Symmetry GOOD

Fluorescence NONE

Inscription(s) IGI LG636494783

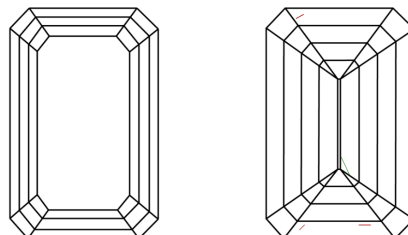
Comments: This Laboratory Grown Diamond was created by Chemical Vapor Deposition (CVD) growth process. Indications of post-growth treatment.

PROPORTIONS



Sample Image Used

CLARITY CHARACTERISTICS



KEY TO SYMBOLS

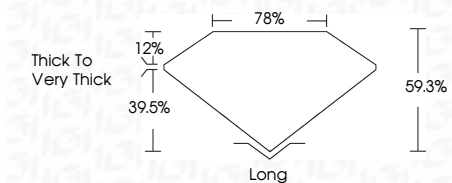
Red symbols indicate internal characteristics. Green symbols indicate external characteristics.

COLOR

D E F G H I J Faint Very Light Light

CLARITY

IF VS 1-2 VS 1-2 SI 1-2 I 1-3 Internally Flawless Very Very Slightly Included Very Slightly Included Slightly Included Included



ADDITIONAL GRADING INFORMATION

Polish EXCELLENT

Symmetry GOOD

Fluorescence NONE

Inscription(s) IGI LG636494783

Comments: This Laboratory Grown Diamond was created by Chemical Vapor Deposition (CVD) growth process. Indications of post-growth treatment.



IGI



Summary table of report details including date, report number, description, measurements, grading results, and additional information.

Comments: This Laboratory Grown Diamond was created by Chemical Vapor Deposition (CVD) growth process. Indications of post-growth treatment.