



**ELECTRONIC COPY**

LG636495127  
Report verification at igi.org



May 27, 2024

IGI Report Number **LG636495127**

Description **LABORATORY GROWN DIAMOND**

Shape and Cutting Style **ROUND BRILLIANT**

Measurements **8.47 - 8.52 X 5.12 MM**

**GRADING RESULTS**

Carat Weight **2.24 CARATS**

Color Grade **D**

Clarity Grade **VVS 2**

Cut Grade **IDEAL**

May 27, 2024

IGI Report Number **LG636495127**

Description **LABORATORY GROWN DIAMOND**

Shape and Cutting Style **ROUND BRILLIANT**

Measurements **8.47 - 8.52 X 5.12 MM**

**GRADING RESULTS**

Carat Weight **2.24 CARATS**

Color Grade **D**

Clarity Grade **VVS 2**

Cut Grade **IDEAL**

**ADDITIONAL GRADING INFORMATION**

Polish **EXCELLENT**

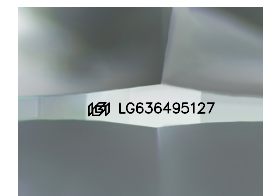
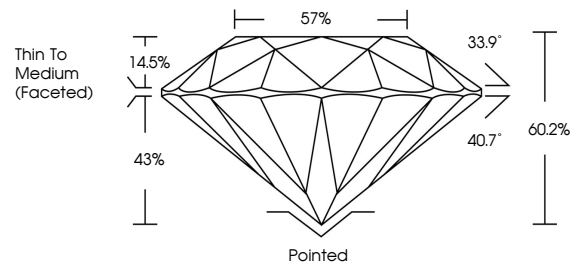
Symmetry **EXCELLENT**

Fluorescence **NONE**

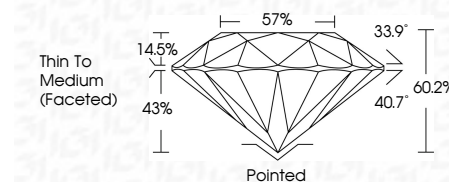
Inscription(s) **LG636495127**

Comments: HEARTS & ARROWS  
This Laboratory Grown Diamond was created by  
Chemical Vapor Deposition (CVD) growth process.  
Type IIa

**PROPORTIONS**



Sample Image Used



**ADDITIONAL GRADING INFORMATION**

Polish **EXCELLENT**

Symmetry **EXCELLENT**

Fluorescence **NONE**

Inscription(s) **LG636495127**

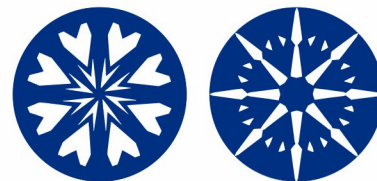
Comments: HEARTS & ARROWS  
This Laboratory Grown Diamond was created by  
Chemical Vapor Deposition (CVD) growth process.  
Type IIa

**COLOR**

D E F G H I J Faint Very Light Light

**CLARITY**

IF	VVS <sup>1-2</sup>	VS <sup>1-2</sup>	SI <sup>1-2</sup>	I <sup>1-3</sup>
Internally Flawless	Very Very Slightly Included	Very Slightly Included	Slightly Included	Included



**IGI**

May 27, 2024	IGI Report No LG636495127	2.24 CARATS	D
8.47 - 8.52 X 5.12 MM	ROUND BRILLIANT	VVS 2	IDEAL
Carat Weight	Color Grade	Depth	60.2%
Clarity Grade	Cut Grade	Table	57%
Color Grade	Cut Grade	Girdle	Thin To Medium (Faceted)
Clarity Grade	Cut Grade	Culet	Pointed
Depth	Cut Grade	Polish	EXCELLENT
Table	Cut Grade	Symmetry	EXCELLENT
Girdle	Cut Grade	Fluorescence	NONE
Thin To Medium (Faceted)	Cut Grade	Inscription(s)	LG636495127

Comments: HEARTS & ARROWS  
This Laboratory Grown Diamond was created by Chemical Vapor Deposition (CVD) growth process.  
Type IIa