



ELECTRONIC COPY

LABORATORY GROWN DIAMOND REPORT

May 31, 2024
IGI Report Number LG636497859
Description LABORATORY GROWN DIAMOND
Shape and Cutting Style SQUARE EMERALD CUT
Measurements 5.78 X 5.70 X 3.64 MM

GRADING RESULTS

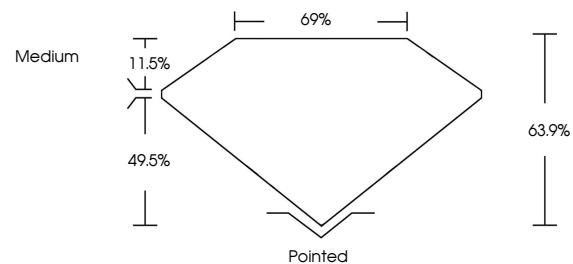
Carat Weight 1.06 CARAT
Color Grade E
Clarity Grade VS 2

ADDITIONAL GRADING INFORMATION

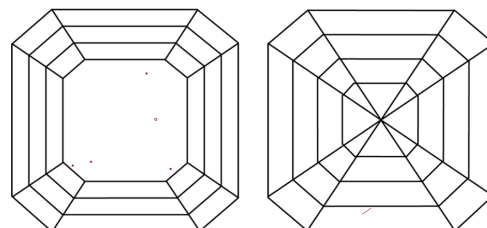
Polish EXCELLENT
Symmetry EXCELLENT
Fluorescence NONE
Inscription(s) IGI LG636497859

Comments: This Laboratory Grown Diamond was created by Chemical Vapor Deposition (CVD) growth process. Type IIa

PROPORTIONS

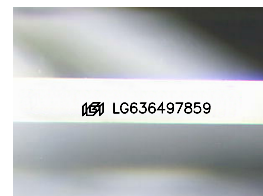


CLARITY CHARACTERISTICS



KEY TO SYMBOLS

Red symbols indicate internal characteristics.
Green symbols indicate external characteristics.



Sample Image Used

COLOR

D E F G H I J Faint Very Light Light

CLARITY

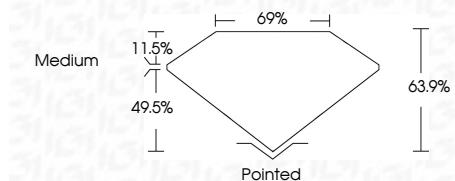
Table with 5 columns: IF, VS 1-2, VS 1-2, SI 1-2, I 1-3. Rows: Internally Flawless, Very Very Slightly Included, Very Slightly Included, Slightly Included, Included.



May 31, 2024
IGI Report Number LG636497859
Description LABORATORY GROWN DIAMOND
Shape and Cutting Style SQUARE EMERALD CUT
Measurements 5.78 X 5.70 X 3.64 MM

GRADING RESULTS

Carat Weight 1.06 CARAT
Color Grade E
Clarity Grade VS 2



ADDITIONAL GRADING INFORMATION

Polish EXCELLENT
Symmetry EXCELLENT
Fluorescence NONE
Inscription(s) IGI LG636497859
Comments: This Laboratory Grown Diamond was created by Chemical Vapor Deposition (CVD) growth process. Type IIa



IGI



May 31, 2024
IGI Report No LG636497859
SQUARE EMERALD CUT
1.06 CARAT E
Color Grade VS 2
Depth 63.9%
Table 69%
Girdle Medium
Culet Pointed
Polish EXCELLENT
Symmetry EXCELLENT
Fluorescence NONE
Inscription(s) IGI LG636497859
Comments: This Laboratory Grown Diamond was created by Chemical Vapor Deposition (CVD) growth process. Type IIa