



ELECTRONIC COPY

LG636498966 Report verification at igi.org



May 30, 2024 IGI Report Number LG636498966 Description LABORATORY GROWN DIAMOND Shape and Cutting Style ROUND BRILLIANT Measurements 7.42 - 7.45 X 4.52 MM GRADING RESULTS Carat Weight 1.54 CARAT Color Grade D Clarity Grade INTERNALLY FLAWLESS Cut Grade IDEAL

May 30, 2024 IGI Report Number LG636498966 Description LABORATORY GROWN DIAMOND Shape and Cutting Style ROUND BRILLIANT Measurements 7.42 - 7.45 X 4.52 MM

GRADING RESULTS

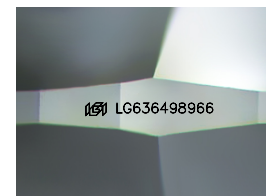
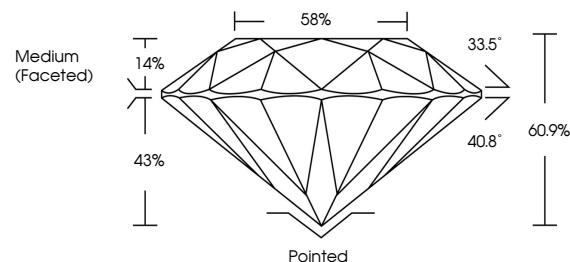
Carat Weight 1.54 CARAT Color Grade D Clarity Grade INTERNALLY FLAWLESS Cut Grade IDEAL

ADDITIONAL GRADING INFORMATION

Polish EXCELLENT Symmetry EXCELLENT Fluorescence NONE Inscription(s) IGI LG636498966

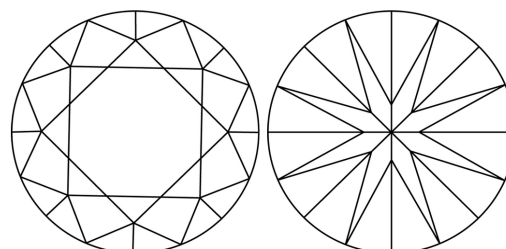
Comments: As Grown - No indication of post-growth treatment. This Laboratory Grown Diamond was created by High Pressure High Temperature (HPHT) growth process. Type II

PROPORTIONS



Sample Image Used

CLARITY CHARACTERISTICS



KEY TO SYMBOLS

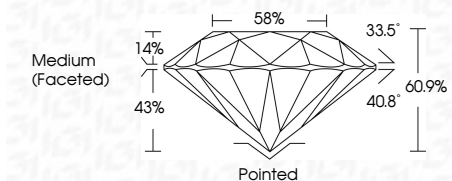
Red symbols indicate internal characteristics. Green symbols indicate external characteristics.

COLOR

D E F G H I J Faint Very Light Light

CLARITY

IF VS 1-2 VS 1-2 SI 1-2 I 1-3 Internally Flawless Very Very Slightly Included Very Slightly Included Slightly Included Included



ADDITIONAL GRADING INFORMATION

Polish EXCELLENT Symmetry EXCELLENT Fluorescence NONE Inscription(s) IGI LG636498966 Comments: As Grown - No indication of post-growth treatment. This Laboratory Grown Diamond was created by High Pressure High Temperature (HPHT) growth process. Type II



IGI

May 30, 2024 IGI Report No LG636498966 ROUND BRILLIANT 7.42 - 7.45 X 4.52 MM 1.54 CARAT D Color Grade D LF IDEAL 60.1% 88% Medium (Faceted) Pointed EXCELLENT EXCELLENT NONE NONE IGI LG636498966 Comments: As Grown - No indication of post-growth treatment. This Laboratory Grown Diamond was created by High Pressure High Temperature (HPHT) growth process. Type II