



ELECTRONIC COPY

LABORATORY GROWN DIAMOND REPORT

June 1, 2024
IGI Report Number LG637439768
Description LABORATORY GROWN DIAMOND
Shape and Cutting Style CUT CORNERED SQUARE MODIFIED BRILLIANT
Measurements 7.40 X 7.23 X 4.71 MM

GRADING RESULTS

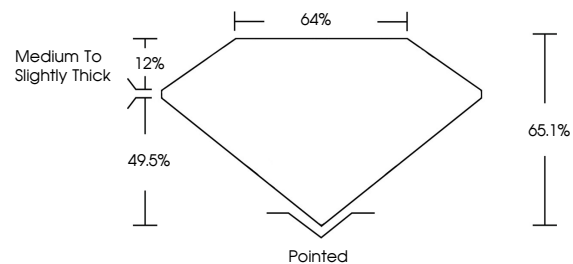
Carat Weight 2.07 CARATS
Color Grade G
Clarity Grade VS 1

ADDITIONAL GRADING INFORMATION

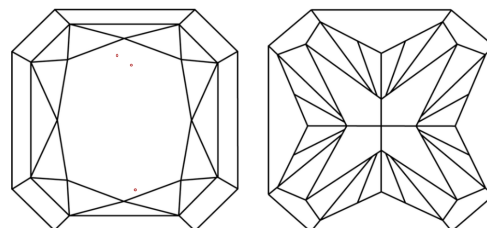
Polish EXCELLENT
Symmetry EXCELLENT
Fluorescence NONE
Inscription(s) IGI LG637439768

Comments: This Laboratory Grown Diamond was created by Chemical Vapor Deposition (CVD) growth process. Type IIa

PROPORTIONS

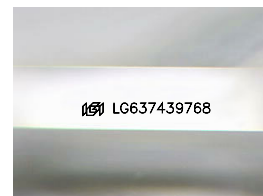


CLARITY CHARACTERISTICS



KEY TO SYMBOLS

Red symbols indicate internal characteristics. Green symbols indicate external characteristics.



Sample Image Used

COLOR

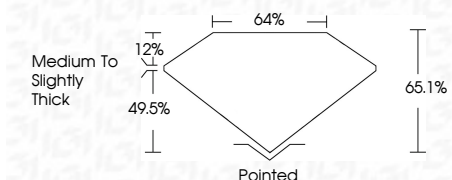
D E F G H I J Faint Very Light Light

CLARITY

IF VS 1-2 VS 1-2 SI 1-2 I 1-3
Internally Flawless Very Very Slightly Included Very Slightly Included Slightly Included Included



June 1, 2024
IGI Report Number LG637439768
Description LABORATORY GROWN DIAMOND
Shape and Cutting Style CUT CORNERED SQUARE MODIFIED BRILLIANT
Measurements 7.40 X 7.23 X 4.71 MM
GRADING RESULTS
Carat Weight 2.07 CARATS
Color Grade G
Clarity Grade VS 1



ADDITIONAL GRADING INFORMATION

Polish EXCELLENT
Symmetry EXCELLENT
Fluorescence NONE
Inscription(s) IGI LG637439768
Comments: This Laboratory Grown Diamond was created by Chemical Vapor Deposition (CVD) growth process. Type IIa



IGI



June 1, 2024
IGI Report No LG637439768
CUT CORNERED SQUARE MODIFIED BRILLIANT
7.40 X 7.23 X 4.71 MM
2.07 CARATS G
VS 1
65.1%
49.5%
Medium to Slightly Thick
Pointed
EXCELLENT
EXCELLENT
NONE
IGI LG637439768
Comments: This Laboratory Grown Diamond was created by Chemical Vapor Deposition (CVD) growth process. Type IIa