



ELECTRONIC COPY

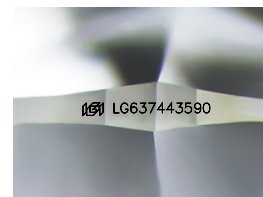
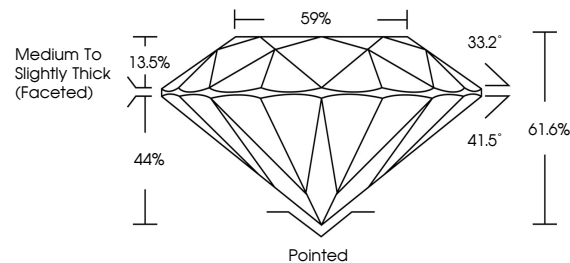
LG637443590
Report verification at igi.org



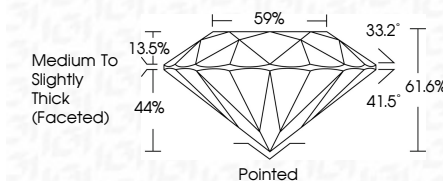
June 6, 2024
IGI Report Number LG637443590
Description LABORATORY GROWN DIAMOND
Shape and Cutting Style ROUND BRILLIANT
Measurements 6.59 - 6.63 X 4.07 MM
GRADING RESULTS
Carat Weight 1.10 CARAT
Color Grade E
Clarity Grade VVS 1
Cut Grade IDEAL

June 6, 2024
IGI Report Number LG637443590
Description LABORATORY GROWN DIAMOND
Shape and Cutting Style ROUND BRILLIANT
Measurements 6.59 - 6.63 X 4.07 MM
GRADING RESULTS
Carat Weight 1.10 CARAT
Color Grade E
Clarity Grade VVS 1
Cut Grade IDEAL

PROPORTIONS



Sample Image Used



ADDITIONAL GRADING INFORMATION

Polish EXCELLENT
Symmetry EXCELLENT
Fluorescence NONE
Inscription(s) IGI LG637443590

Comments: This Laboratory Grown Diamond was created by Chemical Vapor Deposition (CVD) growth process. Type IIa

ADDITIONAL GRADING INFORMATION

Polish EXCELLENT
Symmetry EXCELLENT
Fluorescence NONE
Inscription(s) IGI LG637443590
Comments: This Laboratory Grown Diamond was created by Chemical Vapor Deposition (CVD) growth process. Type IIa

COLOR

D E F G H I J Faint Very Light Light

CLARITY

IF VVS 1-2 VS 1-2 SI 1-2 I 1-3
Internally Flawless Very Very Slightly Included Very Slightly Included Slightly Included Included



IGI

June 6, 2024
IGI Report No LG637443590
ROUND BRILLIANT
6.59 - 6.63 X 4.07 MM
1.10 CARAT E
VVS 1 IDEAL
61.6% 59%
Medium To Slightly Thick (Faceted)
Pointed EXCELLENT EXCELLENT NONE
Polish EXCELLENT
Symmetry EXCELLENT
Fluorescence NONE
Inscriptions(s) IGI LG637443590

Comments: This Laboratory Grown Diamond was created by Chemical Vapor Deposition (CVD) growth process. Type IIa