



ELECTRONIC COPY

LABORATORY GROWN DIAMOND REPORT

June 3, 2024  
IGI Report Number LG637445867  
Description LABORATORY GROWN DIAMOND  
Shape and Cutting Style PRINCESS CUT  
Measurements 7.77 X 7.51 X 5.44 MM

GRADING RESULTS

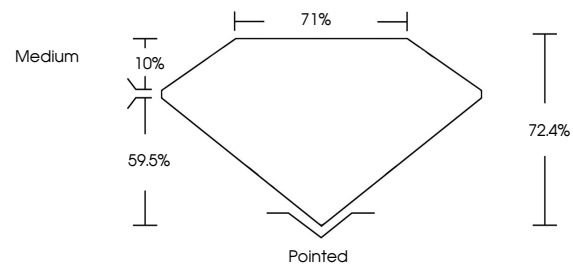
Carat Weight 2.75 CARATS  
Color Grade F  
Clarity Grade VVS 2

ADDITIONAL GRADING INFORMATION

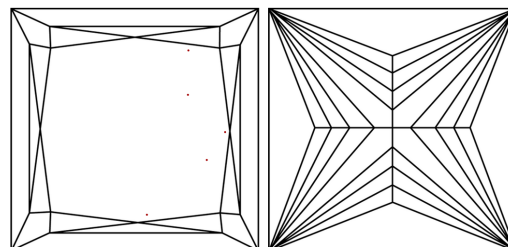
Polish EXCELLENT  
Symmetry EXCELLENT  
Fluorescence NONE  
Inscription(s) IGI LG637445867

Comments: This Laboratory Grown Diamond was created by Chemical Vapor Deposition (CVD) growth process. Type IIa

PROPORTIONS

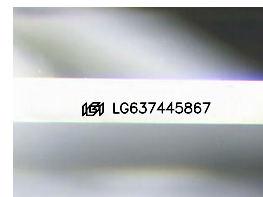


CLARITY CHARACTERISTICS



KEY TO SYMBOLS

Red symbols indicate internal characteristics.  
Green symbols indicate external characteristics.



Sample Image Used

COLOR

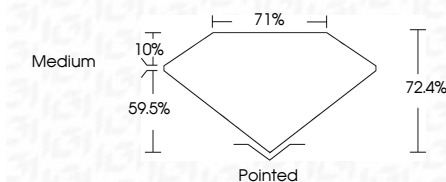
D E F G H I J Faint Very Light Light

CLARITY

IF VS 1-2 VS 1-2 SI 1-2 I 1-3  
Internally Flawless Very Very Slightly Included Very Slightly Included Slightly Included Included



June 3, 2024  
IGI Report Number LG637445867  
Description LABORATORY GROWN DIAMOND  
Shape and Cutting Style PRINCESS CUT  
Measurements 7.77 X 7.51 X 5.44 MM  
GRADING RESULTS  
Carat Weight 2.75 CARATS  
Color Grade F  
Clarity Grade VVS 2



ADDITIONAL GRADING INFORMATION

Polish EXCELLENT  
Symmetry EXCELLENT  
Fluorescence NONE  
Inscription(s) IGI LG637445867  
Comments: This Laboratory Grown Diamond was created by Chemical Vapor Deposition (CVD) growth process. Type IIa



IGI



June 3, 2024  
IGI Report No LG637445867  
PRINCESS CUT  
2.75 CARATS F  
Carat Weight VS 2  
Color Grade 72.4%  
Clarity Grade 71%  
Depth Medium  
Table Pointed  
Girdle EXCELLENT  
Culet EXCELLENT  
Polish NONE  
Symmetry EXCELLENT  
Fluorescence NONE  
Inscription(s) IGI LG637445867  
Comments: This Laboratory Grown Diamond was created by Chemical Vapor Deposition (CVD) growth process. Type IIa