

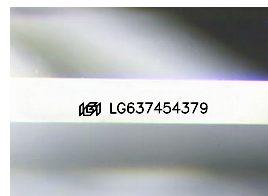
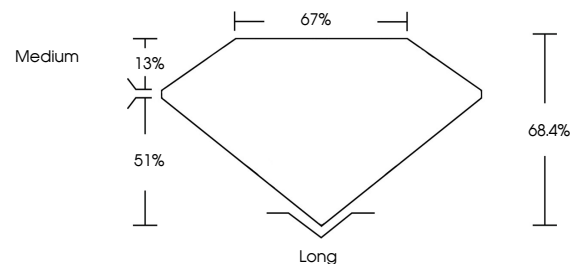


ELECTRONIC COPY

LABORATORY GROWN DIAMOND REPORT

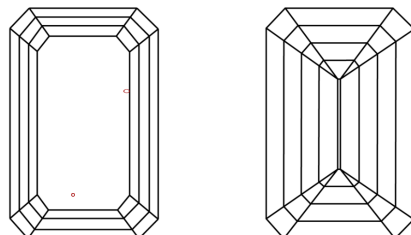
LG637454379
Report verification at lgi.org

PROPORTIONS



Sample Image Used

CLARITY CHARACTERISTICS



KEY TO SYMBOLS

Red symbols indicate internal characteristics.
Green symbols indicate external characteristics.

COLOR

D E F G H I J Faint Very Light Light

CLARITY

IF	VVS ¹⁻²	VS ¹⁻²	SI ¹⁻²	I ¹⁻³
Internally Flawless	Very Very Slightly Included	Very Slightly Included	Slightly Included	Included



© IGI 2020, International Gemological Institute

FD - 10 20

www.igi.org

DIAMOND REPORT



June 4, 2024

IGI Report Number **LG637454379**Description **LABORATORY GROWN DIAMOND**

Shape and Cutting Style **EMERALD CUT**

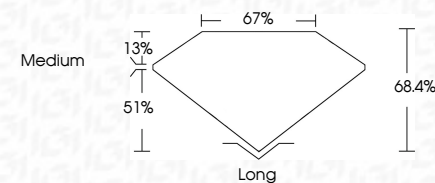
Measurements **8.36 X 5.54 X 3.79 MM**

GRADING RESULTS

Carat Weight **1.77 CARAT**

Color Grade	F
-------------	---

Clarity Grade VS 2



ADDITIONAL GRADING INFORMATION

Polish **EXCELLENT**Symmetry **EXCELLENT**Fluorescence **NONE**Inscription(s) LG637454379

Comments: This Laboratory Grown Diamond was created by Chemical Vapor Deposition (CVD) growth process.
Type IIa



June 4, 2024
GI Report No LG637454379

GI Report No. LG537454379	Carat Weight	1.77 CARAT
HERAUD CUT	Color Grade	F
3.35 X 5.54 X 3.79 MM	Clarity Grade	VS 2
	Depth	68.4%
	Table	67%
	Girdle	Medium
	Culet	Long
	Polish	EXCELLENT
	Symmetry	EXCELLENT
	Fluorescence	NONE
		cert. LG537454379

Comments:
This Laboratory Grown Diamond was created by Chemical Vapor Deposition (CVD) growth process.