



ELECTRONIC COPY

LG637457540
Report verification at igi.org



June 8, 2024

IGI Report Number **LG637457540**

Description **LABORATORY GROWN DIAMOND**

Shape and Cutting Style **EMERALD CUT**

Measurements **7.95 X 5.43 X 3.64 MM**

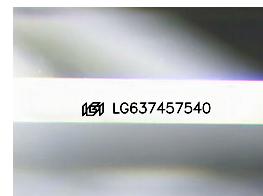
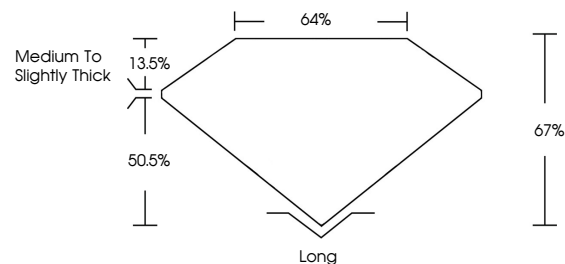
GRADING RESULTS

Carat Weight **1.57 CARAT**

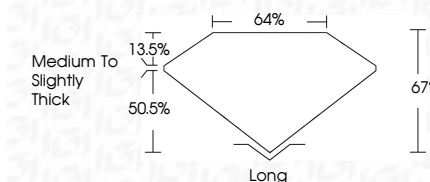
Color Grade **FANCY INTENSE BROWNISH PINK**

Clarity Grade **VVS 2**

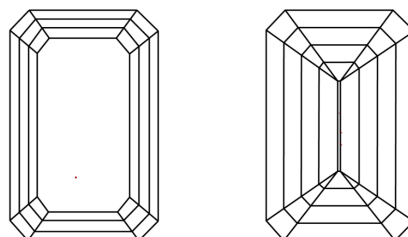
PROPORTIONS



Sample Image Used



CLARITY CHARACTERISTICS



KEY TO SYMBOLS

Red symbols indicate internal characteristics.
Green symbols indicate external characteristics.

COLOR

D E F G H I J Faint Very Light Light

CLARITY

IF	VS ¹⁻²	VS ¹⁻²	SI ¹⁻²	I ¹⁻³
Internally Flawless	Very Very Slightly Included	Very Slightly Included	Slightly Included	Included

ADDITIONAL GRADING INFORMATION

Polish **EXCELLENT**

Symmetry **EXCELLENT**

Fluorescence **SLIGHT**

Inscription(s) **IGI LG637457540**

Comments: This Laboratory Grown Diamond was created by Chemical Vapor Deposition (CVD) growth process. Indications of post-growth treatment.

June 8, 2024

IGI Report Number **LG637457540**

Description **LABORATORY GROWN DIAMOND**

Shape and Cutting Style **EMERALD CUT**

Measurements **7.95 X 5.43 X 3.64 MM**

GRADING RESULTS

Carat Weight **1.57 CARAT**

Color Grade **FANCY INTENSE BROWNISH PINK**

Clarity Grade **VVS 2**

ADDITIONAL GRADING INFORMATION

Polish **EXCELLENT**

Symmetry **EXCELLENT**

Fluorescence **SLIGHT**

Inscription(s) **IGI LG637457540**

Comments: This Laboratory Grown Diamond was created by Chemical Vapor Deposition (CVD) growth process. Indications of post-growth treatment.



IGI



June 8, 2024
IGI Report No. LG637457540
EMERALD CUT
1.57 CARAT
FANCY INTENSE BROWNISH PINK
VVS 2
67%
64%
Medium to Slightly Thick
Long
EXCELLENT
EXCELLENT
SLIGHT
IGI LG637457540
Comments: This Laboratory Grown Diamond was created by Chemical Vapor Deposition (CVD) growth process. Indications of post-growth treatment.