



ELECTRONIC COPY

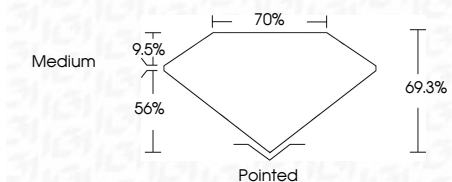
LG637457557
Report verification at igi.org



June 3, 2024
IGI Report Number LG637457557
Description LABORATORY GROWN DIAMOND
Shape and Cutting Style MODIFIED PRINCESS CUT
Measurements 7.05 X 6.80 X 4.71 MM

GRADING RESULTS

Carat Weight 2.02 CARATS
Color Grade G
Clarity Grade VVS 2



ADDITIONAL GRADING INFORMATION

Polish EXCELLENT
Symmetry EXCELLENT
Fluorescence NONE
Inscription(s) LG637457557
Comments: This Laboratory Grown Diamond was created by Chemical Vapor Deposition (CVD) growth process. Type IIa



IGI

June 3, 2024
IGI Report No LG637457557
MODIFIED PRINCESS CUT
7.05 X 6.80 X 4.71 MM
2.02 CARATS
G
VVS 2
69.3%
70%
Medium
Pointed
EXCELLENT
EXCELLENT
NONE
IGI LG637457557

Comments: This Laboratory Grown Diamond was created by Chemical Vapor Deposition (CVD) growth process. Type IIa

LABORATORY GROWN DIAMOND REPORT

June 3, 2024
IGI Report Number LG637457557
Description LABORATORY GROWN DIAMOND
Shape and Cutting Style MODIFIED PRINCESS CUT
Measurements 7.05 X 6.80 X 4.71 MM

GRADING RESULTS

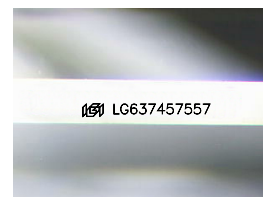
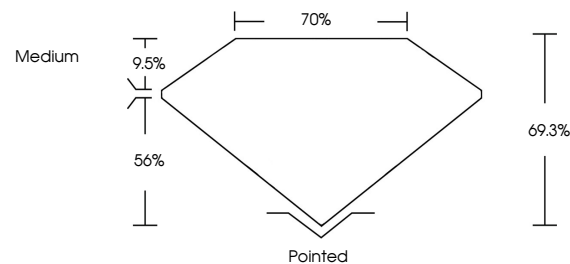
Carat Weight 2.02 CARATS
Color Grade G
Clarity Grade VVS 2

ADDITIONAL GRADING INFORMATION

Polish EXCELLENT
Symmetry EXCELLENT
Fluorescence NONE
Inscription(s) LG637457557

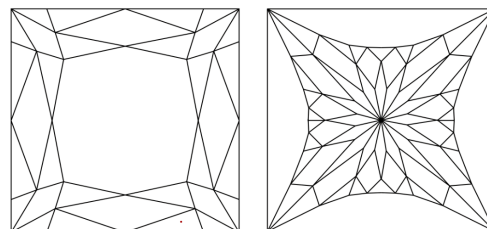
Comments: This Laboratory Grown Diamond was created by Chemical Vapor Deposition (CVD) growth process. Type IIa

PROPORTIONS



Sample Image Used

CLARITY CHARACTERISTICS



KEY TO SYMBOLS

Red symbols indicate internal characteristics.
Green symbols indicate external characteristics.

COLOR

D E F G H I J Faint Very Light Light

CLARITY

IF VVS 1-2 VS 1-2 SI 1-2 I 1-3
Internally Flawless Very Very Slightly Included Very Slightly Included Slightly Included Included