



ELECTRONIC COPY

LG637460236
Report verification at igi.org



June 6, 2024

IGI Report Number **LG637460236**

Description **LABORATORY GROWN DIAMOND**

Shape and Cutting Style **ROUND BRILLIANT**

Measurements **7.85 - 7.88 X 4.79 MM**

GRADING RESULTS

Carat Weight **1.81 CARAT**

Color Grade **E**

Clarity Grade **VS 2**

Cut Grade **IDEAL**

June 6, 2024

IGI Report Number **LG637460236**

Description **LABORATORY GROWN DIAMOND**

Shape and Cutting Style **ROUND BRILLIANT**

Measurements **7.85 - 7.88 X 4.79 MM**

GRADING RESULTS

Carat Weight **1.81 CARAT**

Color Grade **E**

Clarity Grade **VS 2**

Cut Grade **IDEAL**

ADDITIONAL GRADING INFORMATION

Polish **EXCELLENT**

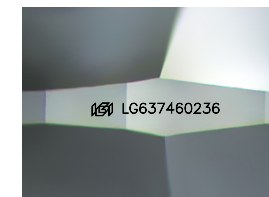
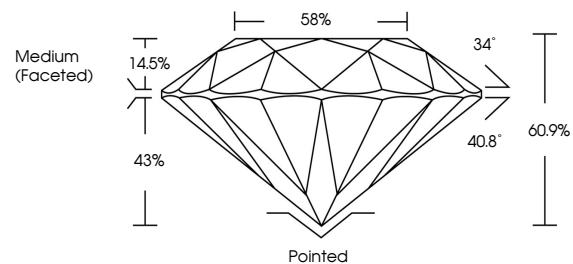
Symmetry **EXCELLENT**

Fluorescence **NONE**

Inscription(s) **IGI LG637460236**

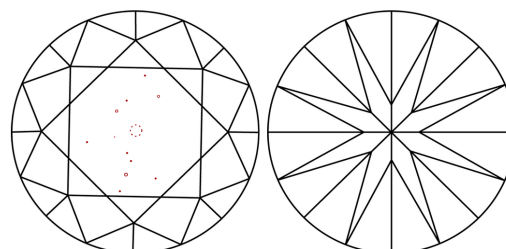
Comments: This Laboratory Grown Diamond was created by Chemical Vapor Deposition (CVD) growth process.
Type IIa

PROPORTIONS



Sample Image Used

CLARITY CHARACTERISTICS



KEY TO SYMBOLS

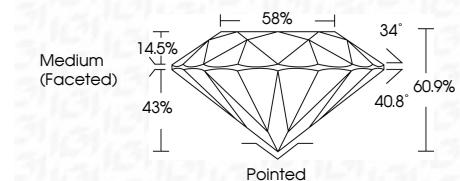
Red symbols indicate internal characteristics.
Green symbols indicate external characteristics.

COLOR

D E F G H I J Faint Very Light Light

CLARITY

IF	VS ¹⁻²	VS ¹⁻²	SI ¹⁻²	I ¹⁻³
Internally Flawless	Very Very Slightly Included	Very Slightly Included	Slightly Included	Included



ADDITIONAL GRADING INFORMATION

Polish **EXCELLENT**

Symmetry **EXCELLENT**

Fluorescence **NONE**

Inscription(s) **IGI LG637460236**

Comments: This Laboratory Grown Diamond was created by Chemical Vapor Deposition (CVD) growth process.
Type IIa



IGI



June 6, 2024	IGI Report No LG637460236	1.81 CARAT	E	Pointed	EXCELLENT	EXCELLENT	NONE	IGI LG637460236
ROUND BRILLIANT	7.85 - 7.88 X 4.79 MM	Color Grade	VS 2	Cut Grade	IDEAL	60.9%	58%	Medium (Faceted)
		Clarity Grade	VS 2	Polish	EXCELLENT	Symmetry	EXCELLENT	None
		Depth	40.8°	Fluorescence	NONE	Inscription(s)	IGI LG637460236	
		Table	14.5%	Comments: This Laboratory Grown Diamond was created by Chemical Vapor Deposition (CVD) growth process.				Type IIa
		Girdle	Medium (Faceted)					