



**ELECTRONIC COPY**

LG637461225  
Report verification at igi.org



June 7, 2024

IGI Report Number **LG637461225**

Description **LABORATORY GROWN DIAMOND**

Shape and Cutting Style **EMERALD CUT**

Measurements **9.05 X 6.63 X 4.37 MM**

**GRADING RESULTS**

Carat Weight **2.53 CARATS**

Color Grade **FANCY INTENSE BLUE**

Clarity Grade **VS 1**

June 7, 2024

IGI Report Number **LG637461225**

Description **LABORATORY GROWN DIAMOND**

Shape and Cutting Style **EMERALD CUT**

Measurements **9.05 X 6.63 X 4.37 MM**

**GRADING RESULTS**

Carat Weight **2.53 CARATS**

Color Grade **FANCY INTENSE BLUE**

Clarity Grade **VS 1**

**ADDITIONAL GRADING INFORMATION**

Polish **EXCELLENT**

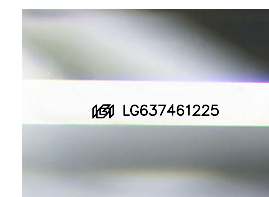
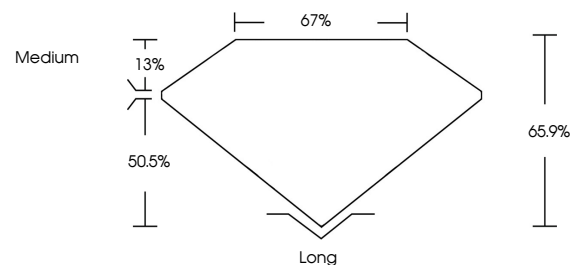
Symmetry **EXCELLENT**

Fluorescence **NONE**

Inscription(s) **IGI LG637461225**

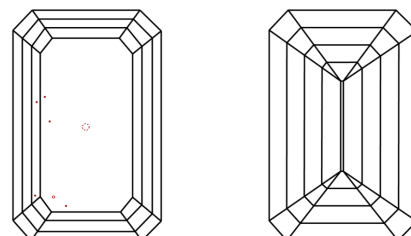
Comments: This Laboratory Grown Diamond was created by Chemical Vapor Deposition (CVD) growth process. Indications of post-growth treatment.

**PROPORTIONS**



Sample Image Used

**CLARITY CHARACTERISTICS**



**KEY TO SYMBOLS**

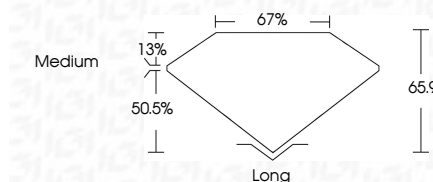
Red symbols indicate internal characteristics.  
Green symbols indicate external characteristics.

**COLOR**

D E F G H I J Faint Very Light Light

**CLARITY**

IF	VS <sup>1-2</sup>	VS <sup>1-2</sup>	SI <sup>1-2</sup>	I <sup>1-3</sup>
Internally Flawless	Very Very Slightly Included	Very Slightly Included	Slightly Included	Included



**ADDITIONAL GRADING INFORMATION**

Polish **EXCELLENT**

Symmetry **EXCELLENT**

Fluorescence **NONE**

Inscription(s) **IGI LG637461225**

Comments: This Laboratory Grown Diamond was created by Chemical Vapor Deposition (CVD) growth process. Indications of post-growth treatment.



**IGI**



June 7, 2024  
IGI Report No LG637461225  
**EMERALD CUT**

**2.53 CARATS**  
Carat Weight  
**FANCY INTENSE BLUE**  
Color Grade

**VS 1**  
Clarity Grade  
**65.9%**  
Depth  
**67%**  
Table  
**Medium**  
Girdle

**Long**  
Culet  
**EXCELLENT**  
Polish  
**EXCELLENT**  
Symmetry  
**NONE**  
Fluorescence  
**IGI LG637461225**  
Inscription(s)

Comments: This Laboratory Grown Diamond was created by Chemical Vapor Deposition (CVD) growth process. Indications of post-growth treatment.