



**INTERNATIONAL  
GEMOLOGICAL  
INSTITUTE**

**ELECTRONIC COPY**

**LG637462987**

**LABORATORY GROWN DIAMOND REPORT**

June 12, 2024  
 IGI Report Number **LG637462987**  
 Description **LABORATORY GROWN DIAMOND**  
 Shape and Cutting Style **ROUND BRILLIANT**  
 Measurements **5.89 - 5.91 X 3.64 MM**

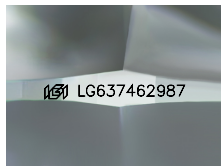
**GRADING RESULTS**

Carat Weight **0.79 CARAT**  
 Color Grade **FANCY INTENSE GREEN**  
 Clarity Grade **VS 2**  
 Cut Grade **VERY GOOD**

**ADDITIONAL GRADING INFORMATION**

Polish **EXCELLENT**  
 Symmetry **VERY GOOD**  
 Fluorescence **NONE**  
 Inscription(s) **IGI LG637462987**

Comments: This Laboratory Grown Diamond was created by High Pressure High Temperature (HPHT) growth process. Indications of post-growth treatment.



Sample Image Used



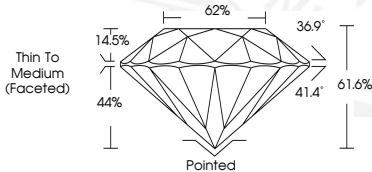
June 12, 2024  
 IGI Report Number **LG637462987**  
 ROUND BRILLIANT  
 LABORATORY GROWN DIAMOND  
 5.89 - 5.91 X 3.64 MM  
 Carat Weight **0.79 CARAT**  
 Color Grade **FANCY INTENSE GREEN**  
 Clarity Grade **VS 2**  
 Cut Grade **VERY GOOD**  
 Polish **EXCELLENT**  
 Symmetry **VERY GOOD**  
 Fluorescence **NONE**  
 Inscription(s) **IGI LG637462987**

Comments: This Laboratory Grown Diamond was created by High Pressure High Temperature (HPHT) growth process. Indications of post-growth treatment.



June 12, 2024  
 IGI Report Number **LG637462987**  
 ROUND BRILLIANT  
 LABORATORY GROWN DIAMOND  
 5.89 - 5.91 X 3.64 MM  
 Carat Weight **0.79 CARAT**  
 Color Grade **FANCY INTENSE GREEN**  
 Clarity Grade **VS 2**  
 Cut Grade **VERY GOOD**  
 Polish **EXCELLENT**  
 Symmetry **VERY GOOD**  
 Fluorescence **NONE**  
 Inscription(s) **IGI LG637462987**

Comments: This Laboratory Grown Diamond was created by High Pressure High Temperature (HPHT) growth process. Indications of post-growth treatment.



THIS DOCUMENT WAS PRODUCED WITH THE FOLLOWING SECURITY MEASURES: SPECIAL DOCUMENT PAPER, INK SCREENS, WATERMARK, BACKGROUND DESIGNS, HOLOGRAM AND OTHER SECURITY FEATURES NOT LISTED AND DO EXCEED DOCUMENT SECURITY INDUSTRY GUIDELINES.

For terms & conditions and to verify this report, please visit [www.igi.org](http://www.igi.org)