



ELECTRONIC COPY

LG637464893
Report verification at igi.org



June 3, 2024
IGI Report Number LG637464893
Description LABORATORY GROWN DIAMOND
Shape and Cutting Style CUT CORNERED RECTANGULAR MODIFIED BRILLIANT
Measurements 12.26 X 8.45 X 5.82 MM
GRADING RESULTS
Carat Weight 5.02 CARATS
Color Grade H
Clarity Grade VS 1

LABORATORY GROWN DIAMOND REPORT

June 3, 2024
IGI Report Number LG637464893
Description LABORATORY GROWN DIAMOND
Shape and Cutting Style CUT CORNERED RECTANGULAR MODIFIED BRILLIANT
Measurements 12.26 X 8.45 X 5.82 MM

GRADING RESULTS

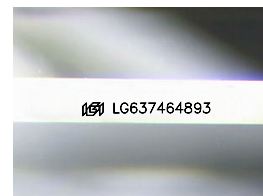
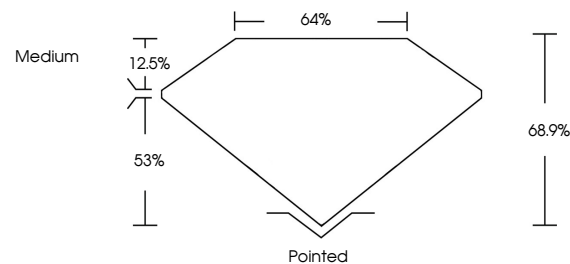
Carat Weight 5.02 CARATS
Color Grade H
Clarity Grade VS 1

ADDITIONAL GRADING INFORMATION

Polish EXCELLENT
Symmetry EXCELLENT
Fluorescence NONE
Inscription(s) LG637464893

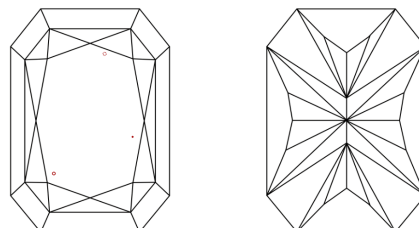
Comments: This Laboratory Grown Diamond was created by Chemical Vapor Deposition (CVD) growth process. Type IIa

PROPORTIONS



Sample Image Used

CLARITY CHARACTERISTICS



KEY TO SYMBOLS

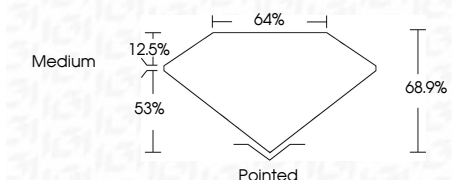
Red symbols indicate internal characteristics.
Green symbols indicate external characteristics.

COLOR

D E F G H I J Faint Very Light Light

CLARITY

IF VS 1-2 VS 1-2 SI 1-2 I 1-3
Internally Flawless Very Very Slightly Included Very Slightly Included Slightly Included Included



ADDITIONAL GRADING INFORMATION

Polish EXCELLENT
Symmetry EXCELLENT
Fluorescence NONE
Inscription(s) LG637464893
Comments: This Laboratory Grown Diamond was created by Chemical Vapor Deposition (CVD) growth process. Type IIa



IGI



June 3, 2024
IGI Report No. LG637464893
CUT CORNERED RECT. MODIFIED BRILLIANT
5.02 CARATS H
12.26 X 8.45 X 5.82 MM
Color Grade VS 1
Depth 68.9%
Table 53%
Girdle Medium
Culet Pointed
Polish EXCELLENT
Symmetry EXCELLENT
Fluorescence NONE
Inscription(s) LG637464893
Comments: This Laboratory Grown Diamond was created by Chemical Vapor Deposition (CVD) growth process. Type IIa