



ELECTRONIC COPY

LG637465239
Report verification at igi.org



June 4, 2024
IGI Report Number LG637465239
Description LABORATORY GROWN DIAMOND
Shape and Cutting Style SQUARE EMERALD CUT
Measurements 9.14 X 9.05 X 5.75 MM

LABORATORY GROWN DIAMOND REPORT

June 4, 2024
IGI Report Number LG637465239
Description LABORATORY GROWN DIAMOND
Shape and Cutting Style SQUARE EMERALD CUT
Measurements 9.14 X 9.05 X 5.75 MM

GRADING RESULTS

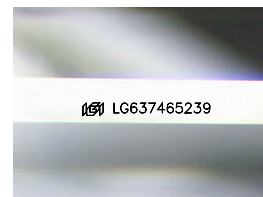
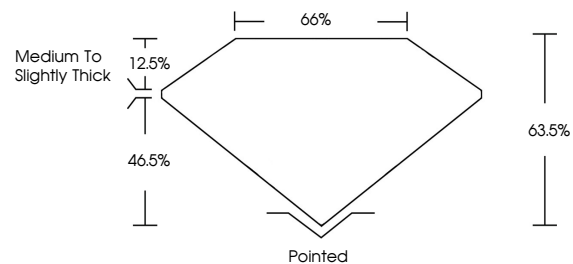
Carat Weight 4.62 CARATS
Color Grade D
Clarity Grade VVS 2

ADDITIONAL GRADING INFORMATION

Polish EXCELLENT
Symmetry EXCELLENT
Fluorescence NONE
Inscription(s) IGI LG637465239

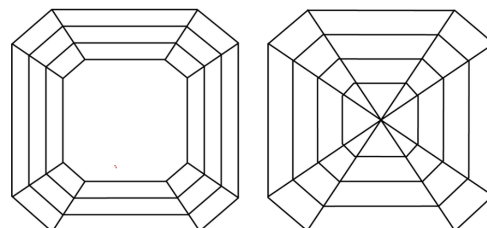
Comments: This Laboratory Grown Diamond was created by Chemical Vapor Deposition (CVD) growth process. Type IIa

PROPORTIONS



Sample Image Used

CLARITY CHARACTERISTICS



KEY TO SYMBOLS

Red symbols indicate internal characteristics.
Green symbols indicate external characteristics.

COLOR

D E F G H I J Faint Very Light Light

CLARITY

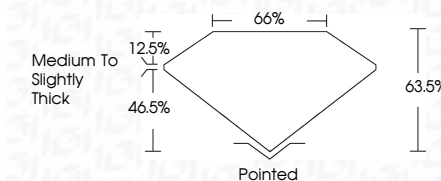
IF VVS 1-2 VS 1-2 SI 1-2 I 1-3
Internally Flawless Very Very Slightly Included Very Slightly Included Slightly Included Included

GRADING RESULTS

Carat Weight 4.62 CARATS
Color Grade D
Clarity Grade VVS 2

ADDITIONAL GRADING INFORMATION

Polish EXCELLENT
Symmetry EXCELLENT
Fluorescence NONE
Inscription(s) IGI LG637465239
Comments: This Laboratory Grown Diamond was created by Chemical Vapor Deposition (CVD) growth process. Type IIa



IGI



June 4, 2024
IGI Report No LG637465239
SQUARE EMERALD CUT
9.14 X 9.05 X 5.75 MM
4.62 CARATS
D
VVS 2
63.5%
65%
Medium to Slightly Thick
Pointed
EXCELLENT
EXCELLENT
NONE
IGI LG637465239
Comments: This Laboratory Grown Diamond was created by Chemical Vapor Deposition (CVD) growth process. Type IIa