



ELECTRONIC COPY

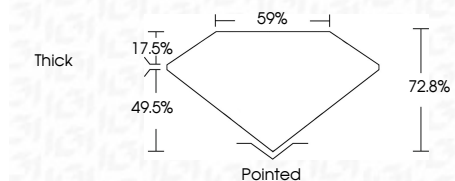
LG637470049
Report verification at igi.org



June 11, 2024
IGI Report Number **LG637470049**
Description **LABORATORY GROWN DIAMOND**
Shape and Cutting Style **CUT CORNERED
RECTANGULAR MODIFIED
BRILLIANT**
Measurements **8.69 X 6.02 X 4.38 MM**

GRADING RESULTS

Carat Weight **2.22 CARATS**
Color Grade **FANCY VIVID YELLOW**
Clarity Grade **VVS 2**



ADDITIONAL GRADING INFORMATION

Polish **EXCELLENT**
Symmetry **EXCELLENT**
Fluorescence **NONE**
Inscription(s) **IGI LG637470049**
Comments: This Laboratory Grown Diamond was created by Chemical Vapor Deposition (CVD) growth process.
Secondary color: Brown



June 11, 2024
IGI Report No LG637470049
CUT CORNERED RECT. MODIFIED BRILLIANT
8.69 X 6.02 X 4.38 MM
2.22 CARATS
FANCY VIVID YELLOW
VVS 2
72.8%
59%
Thick
Pointed
EXCELLENT
EXCELLENT
NONE
IGI LG637470049
Comments: This Laboratory Grown Diamond was created by Chemical Vapor Deposition (CVD) growth process.
Secondary color: Brown

LABORATORY GROWN DIAMOND REPORT

June 11, 2024
IGI Report Number **LG637470049**
Description **LABORATORY GROWN DIAMOND**
Shape and Cutting Style **CUT CORNERED RECTANGULAR
MODIFIED BRILLIANT**
Measurements **8.69 X 6.02 X 4.38 MM**

GRADING RESULTS

Carat Weight **2.22 CARATS**
Color Grade **FANCY VIVID YELLOW**
Clarity Grade **VVS 2**

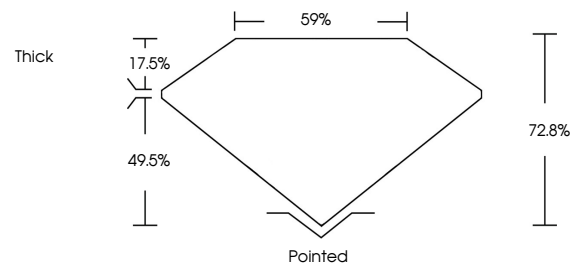
ADDITIONAL GRADING INFORMATION

Polish **EXCELLENT**
Symmetry **EXCELLENT**
Fluorescence **NONE**
Inscription(s) **IGI LG637470049**

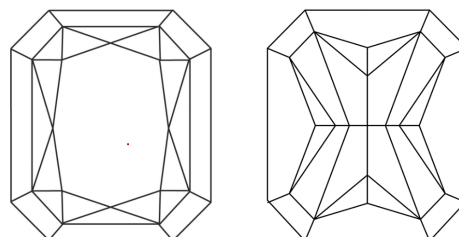
Comments: This Laboratory Grown Diamond was created by Chemical Vapor Deposition (CVD) growth process.

Secondary color: Brown

PROPORTIONS

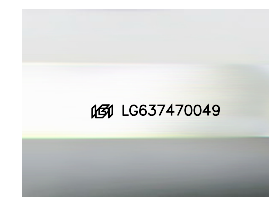


CLARITY CHARACTERISTICS



KEY TO SYMBOLS

Red symbols indicate internal characteristics.
Green symbols indicate external characteristics.



Sample Image Used

COLOR

D E F G H I J Faint Very Light Light

CLARITY

IF	VVS ¹⁻²	VS ¹⁻²	SI ¹⁻²	I ¹⁻³
Internally Flawless	Very Very Slightly Included	Very Slightly Included	Slightly Included	Included

