



ELECTRONIC COPY

LABORATORY GROWN DIAMOND REPORT

June 7, 2024
IGI Report Number LG637471070
Description LABORATORY GROWN DIAMOND
Shape and Cutting Style EMERALD CUT
Measurements 8.07 X 5.46 X 3.64 MM

GRADING RESULTS

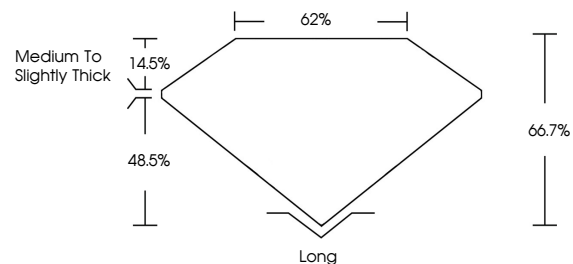
Carat Weight 1.60 CARAT
Color Grade F
Clarity Grade VVS 2

ADDITIONAL GRADING INFORMATION

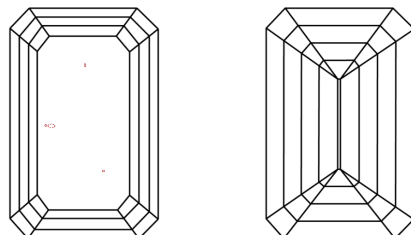
Polish EXCELLENT
Symmetry EXCELLENT
Fluorescence NONE
Inscription(s) IGI LG637471070

Comments: This Laboratory Grown Diamond was created by Chemical Vapor Deposition (CVD) growth process.
Type IIa

PROPORTIONS

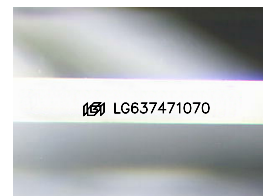


CLARITY CHARACTERISTICS



KEY TO SYMBOLS

Red symbols indicate internal characteristics.
Green symbols indicate external characteristics.



Sample Image Used

COLOR

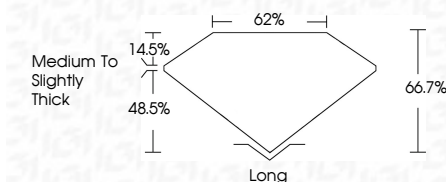
D E F G H I J Faint Very Light Light

CLARITY

IF VVS 1-2 VS 1-2 SI 1-2 I 1-3
Internally Flawless Very Very Slightly Included Very Slightly Included Slightly Included Included



June 7, 2024
IGI Report Number LG637471070
Description LABORATORY GROWN DIAMOND
Shape and Cutting Style EMERALD CUT
Measurements 8.07 X 5.46 X 3.64 MM
GRADING RESULTS
Carat Weight 1.60 CARAT
Color Grade F
Clarity Grade VVS 2



ADDITIONAL GRADING INFORMATION

Polish EXCELLENT
Symmetry EXCELLENT
Fluorescence NONE
Inscription(s) IGI LG637471070
Comments: This Laboratory Grown Diamond was created by Chemical Vapor Deposition (CVD) growth process.
Type IIa



IGI



June 7, 2024
IGI Report No LG637471070
EMERALD CUT
8.07 X 5.46 X 3.64 MM
Carat Weight 1.60 CARAT
Color Grade F
Clarity Grade VVS 2
Depth 66.7%
Table 62%
Girdle Medium to Slightly Thick
Culet Long
Polish EXCELLENT
Symmetry EXCELLENT
Fluorescence NONE
Inscription(s) IGI LG637471070
Comments: This Laboratory Grown Diamond was created by Chemical Vapor Deposition (CVD) growth process.
Type IIa