



ELECTRONIC COPY

LG637481725
Report verification at igi.org



June 7, 2024
IGI Report Number **LG637481725**
Description **LABORATORY GROWN DIAMOND**
Shape and Cutting Style **ROUND BRILLIANT**
Measurements **6.47 - 6.47 X 4.08 MM**
GRADING RESULTS
Carat Weight **1.05 CARAT**
Color Grade **E**
Clarity Grade **VVS 2**
Cut Grade **EXCELLENT**

June 7, 2024
IGI Report Number **LG637481725**
Description **LABORATORY GROWN DIAMOND**
Shape and Cutting Style **ROUND BRILLIANT**
Measurements **6.47 - 6.47 X 4.08 MM**

GRADING RESULTS

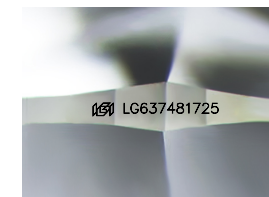
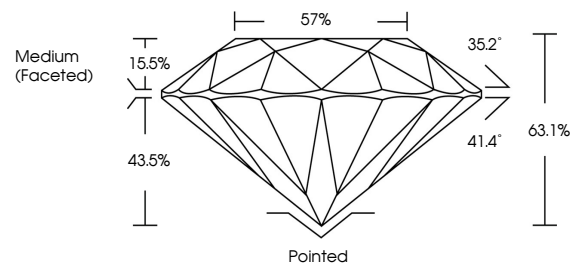
Carat Weight **1.05 CARAT**
Color Grade **E**
Clarity Grade **VVS 2**
Cut Grade **EXCELLENT**

ADDITIONAL GRADING INFORMATION

Polish **EXCELLENT**
Symmetry **EXCELLENT**
Fluorescence **NONE**
Inscription(s) **LG637481725**

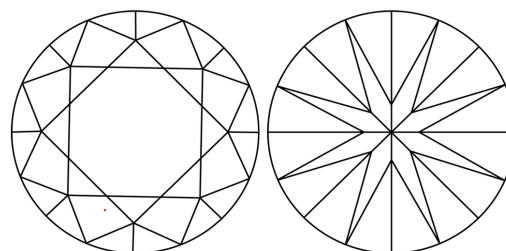
Comments: This Laboratory Grown Diamond was created by Chemical Vapor Deposition (CVD) growth process.
Type IIa

PROPORTIONS



Sample Image Used

CLARITY CHARACTERISTICS



KEY TO SYMBOLS

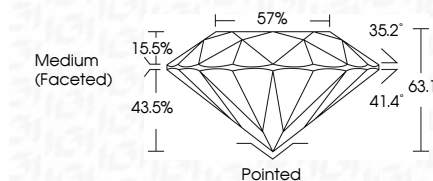
Red symbols indicate internal characteristics.
Green symbols indicate external characteristics.

COLOR

D E F G H I J Faint Very Light Light

CLARITY

IF	VVS ¹⁻²	VS ¹⁻²	SI ¹⁻²	I ¹⁻³
Internally Flawless	Very Very Slightly Included	Very Slightly Included	Slightly Included	Included



ADDITIONAL GRADING INFORMATION

Polish **EXCELLENT**
Symmetry **EXCELLENT**
Fluorescence **NONE**
Inscription(s) **LG637481725**
Comments: This Laboratory Grown Diamond was created by Chemical Vapor Deposition (CVD) growth process.
Type IIa



IGI



June 7, 2024
IGI Report No LG637481725
ROUND BRILLIANT
6.47 - 6.47 X 4.08 MM
1.05 CARAT
E
VVS 2
EXCELLENT
63.1%
57%
Medium (Faceted)
Pointed
EXCELLENT
EXCELLENT
NONE
IGI LG637481725
Comments: This Laboratory Grown Diamond was created by Chemical Vapor Deposition (CVD) growth process.
Type IIa